

TEMPORARY TERMINATION

SEAMS OVERLAPPED 4" MIN. AND SECURED WITH WIDE CROWN BOX STAPLES EVERY 3" O.C. AND WITH NAILS AND WASHERS EVERY 24" O.C. (SEE SEAM DETAILS)

PARASEAL LG, BENTONITE SIDE FACING INSTALLER

SUPERSTOP AT COLD JOINTS, 2" FROM FACE OF WALL

TREMPROOF 260 AT 100 WET MILLS

12" x 12" PARASEAL DETAIL SHEET

NOTE:
PARASEAL PRODUCTS REQUIRE A MIN 24 PSF OF COMPACTION/CONFINEMENT IN ORDER TO FUNCTION AS DESIGNED
NOT RECOMMENDED FOR USE IN SUBMERGED CONDITIONS

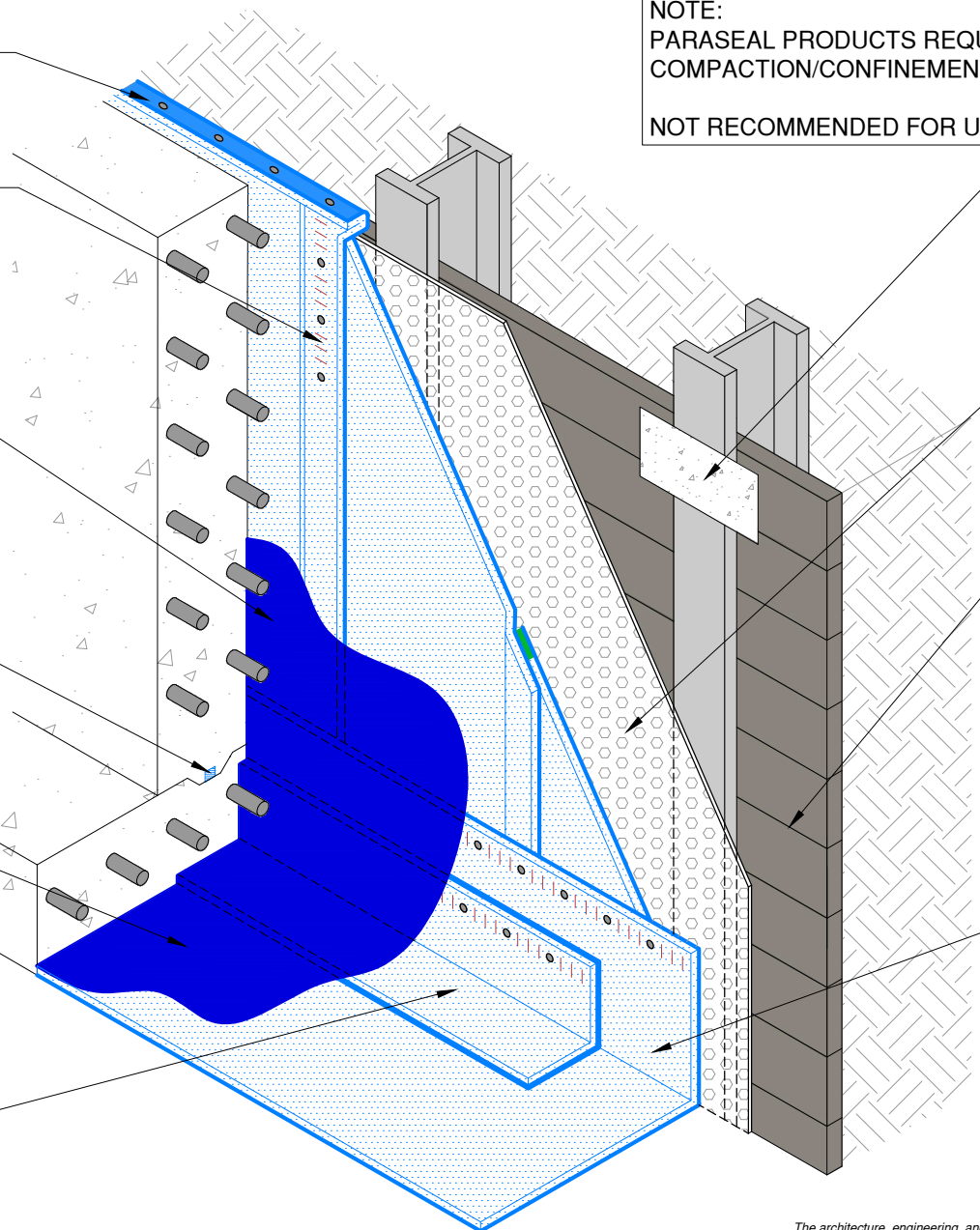
PLACE CEMENT BOARD OVER SOLDIER PILES AT THE AREA TO BE CUT

TREMDRAIN AS SPECIFIED

ANY VOIDS GREATER THAN 1" IN WIDTH, DEPTH OR HEIGHT SHALL BE REPAIRED WITH NON-SHRINK GROUT, MIN. 24 GAUGE SHEET METAL OR TREATED PLYWOOD (REFER TO APPLICATION INSTRUCTIONS)

PARASEAL LG STARTER STRIP TO EXTEND 6" MIN. BELOW TOP OF FOOTING

REFERENCE SEAM DETAILS



The architecture, engineering, and design of the project using the Tremco products are the responsibility of the project's design professional. All products and systems must comply with local building codes and standards. This detail is for general information and guidance only and Tremco specifically disclaims any liability for the use of this detail. The project design professional determines, in its sole discretion, whether this detail or a functionally equivalent detail is best suited for the project. This detail is subject to change without notice. Contact Tremco to ensure you have the most recent version.

TREMPROOF TWS Below Slab on Grade



Tremco Technical Support: 866-209-2404

Detail: TREMPROOF TWS Below Slab on Grade at Blindside Wall

Drawn by: HDE

Checked by: WH

Scale: NTS

Date: 4/28/2022

File Name:

TWS-BSOG-10



Construction Products Group

www.tremcocpg.com