

Approved Plant Mixture for 2-6" Soil:
Hardy, low growing vegetation

Approved Plant Mixture for >6" Soil:
Valley plants, small trees

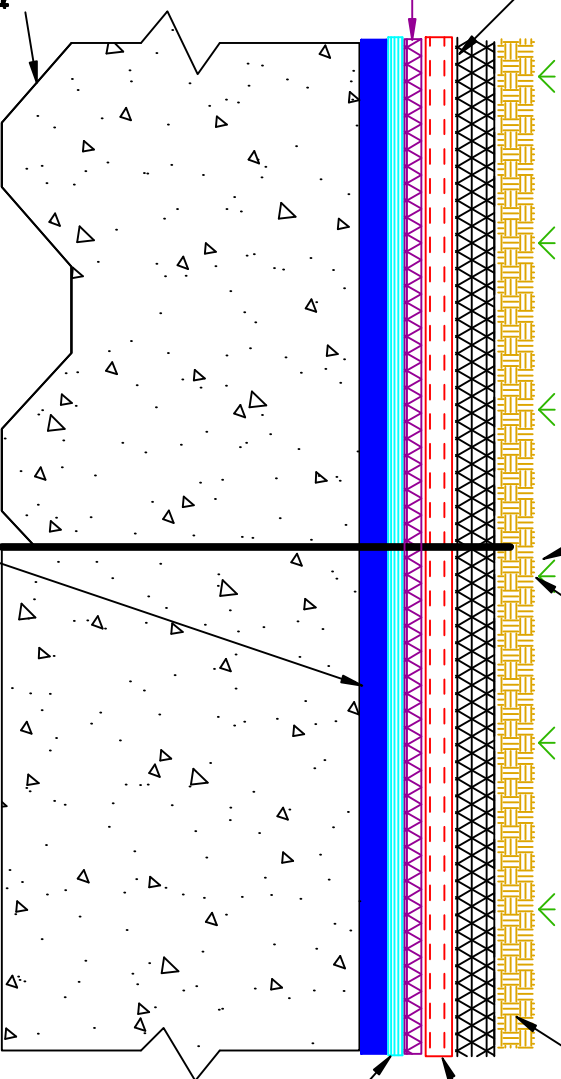
NOTE:
Consult Tremco Technical Services
Or Your Local Tremco Representative
For Appropriate Waterproofing and
TREMDrain Products.

Approved TREMDrain GS
Open side of dimples facing up

TREMDrain S

Shown on Top of Metal
Pan Deck. Please Contact
Your Local Tremco
Technical Representative
for Recommendations.

Tremco Waterproofing System
-TREMproof 250GC @120 mils



Approved Growing Medium
Depth of Soil:
Extensive System, 2-6"
Intensive System, >6"

Insulation

Tremco HDPE 40 Root Barrier
Seams:
1.) Para JT Tape, or
2.) Heat Weld

TREMCO. 3725 Green Road 216-282-9888
Beechwood, Ohio 44122

Project: **TREMproof 250GC Green Scape System**

Drawn By: W. Hensley	Scale: Not To Scale	Date: 03/19/09	Drawings/Details No. GS
-----------------------------	----------------------------	-----------------------	--------------------------------