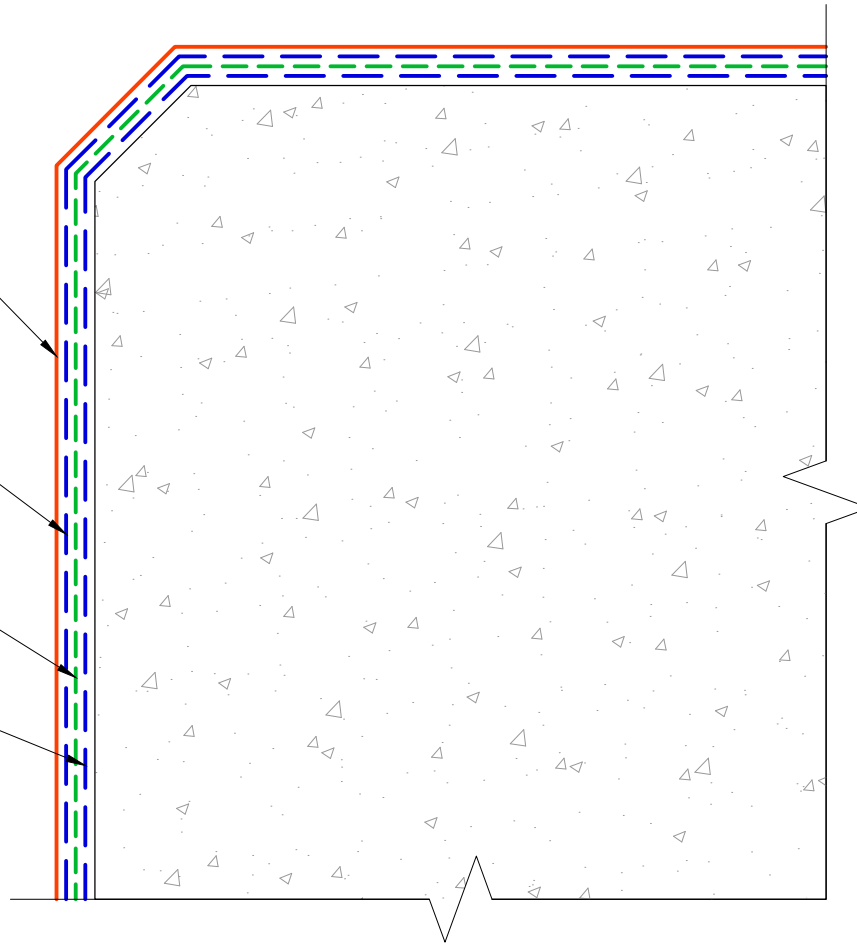


TREMPROOF TRA SHEETING

TREMPROOF 250GC
AT 30 MILS

VULKEM 191 PRIMER

TREMPROOF 250GC
AT 90 MILS



NOTE: TERMINATE TREMPROOF TRA SHEETING 6" PAST ANY CHANGE IN PLANE OR COLD JOINT.

The architecture, engineering, and design of the project using the Tremco products are the responsibility of the project's design professional. All products and systems must comply with local building codes and standards. This detail is for general information and guidance only and Tremco specifically disclaims any liability for the use of this detail. The project design professional determines, in its sole discretion, whether this detail or a functionally equivalent detail is best suited for the project. This detail is subject to change without notice. Contact Tremco to ensure you have the most recent version.

TREMProof Dual Waterproofing System



Tremco Technical Support: 866-209-2404

Detail: TREMProof DWS at Outside Corner with Chamfered Edge

Drawn by: HDE

Checked by: WH

Scale: NTS

Date: 3/8/2022

File Name:

DWS-G-03



Construction Products Group

www.tremcocpg.com