

Vulkem 346 or 951NF top coat

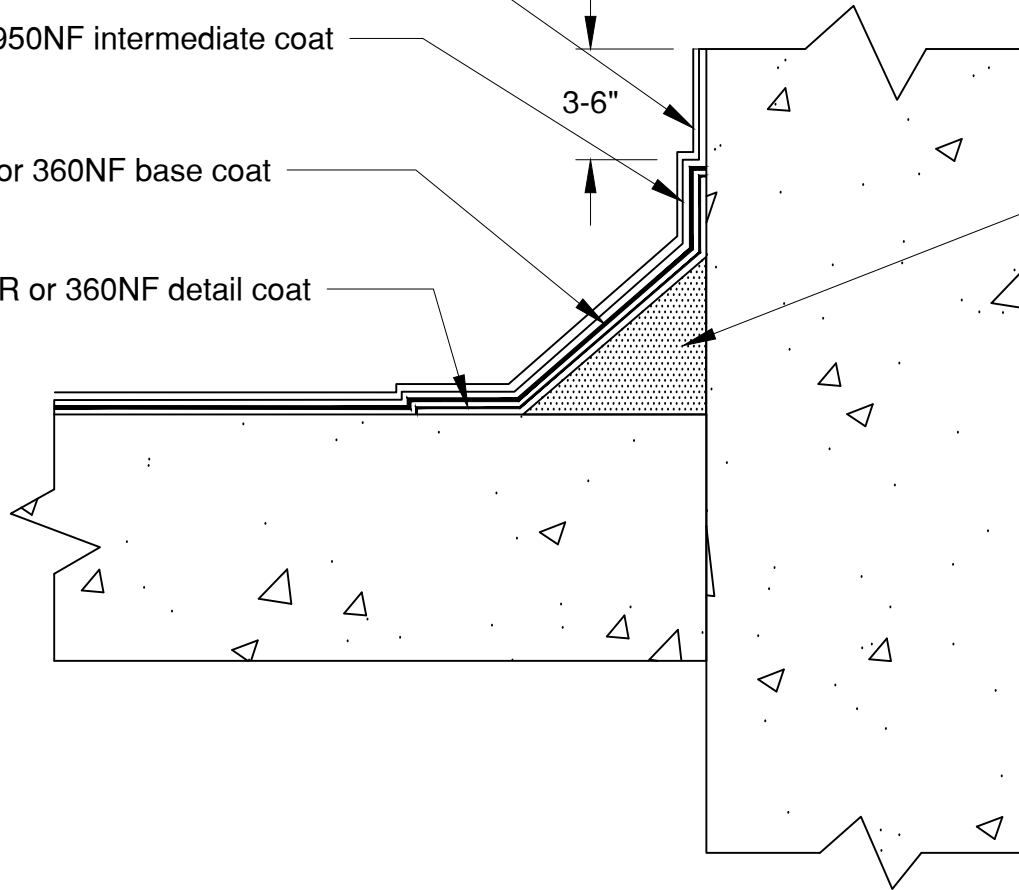
Vulkem 345 or 950NF intermediate coat

Vulkem 350NF or 360NF base coat

Vulkem 350NF-R or 360NF detail coat

3-6"

Dymonic 100,
Dymeric 240FC or
approved Tremco
sealant cant bead



Note: Vulkem 950NF may be used as topcoat in areas with no U.V.

Treatment Of Floor To Wall Cold Joints In Deck Coatings

Drawing Number

DC-25

Date: 07/09/10

Detail

Deck Coating Details

Drawn by: K. Thorpe
Scale: None

3735 Green Road * Beachwood, OH 44122
Phone : 866-209-2404 * Fax: 216-766-5535

TREMCO
www.tremcosealants.com