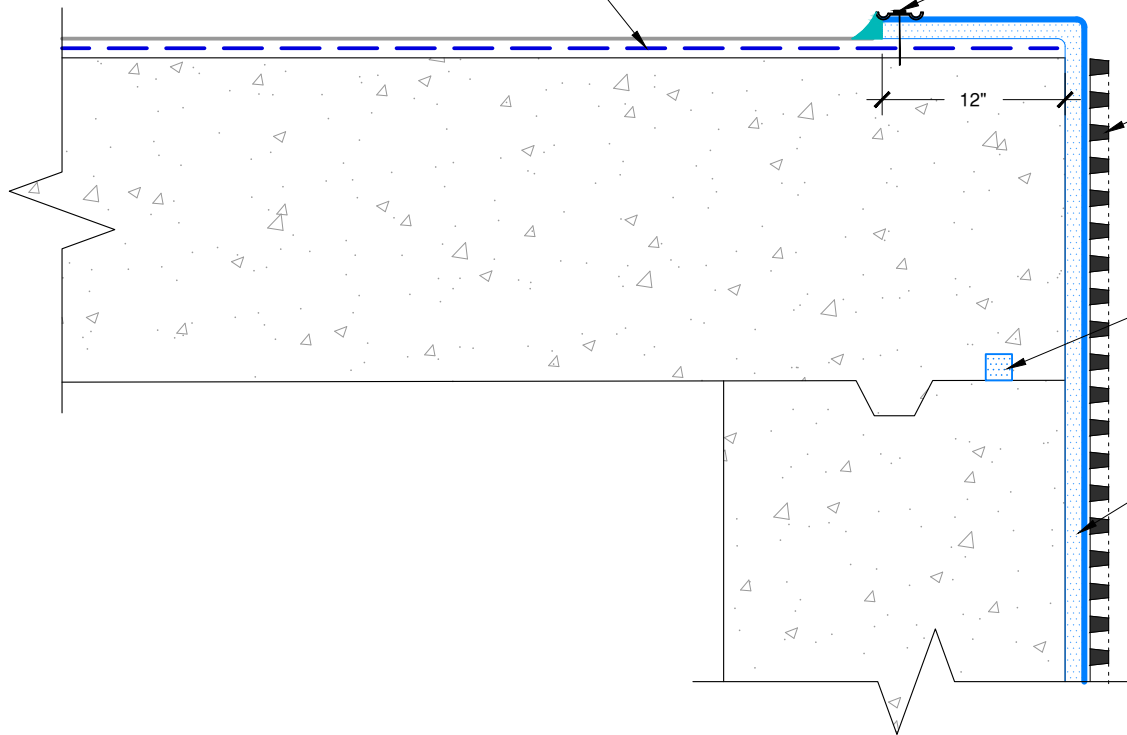


FLUID APPLIED TREMCO MEMBRANE,  
AS SPECIFIED

PARATERM BAR NAILED EVERY 8" O.C. AND  
SEALED WITH A CANT BEAD OF APPROVED  
SEALANT



TREMDRAIN AS SPECIFIED, APPLIED  
ABOVE WATERTABLE ONLY

SUPERSTOP, 2" FROM FACE OF WALL

PARASEAL GM/LG, BENTONITE SIDE  
AGAINST CONCRETE

NOTES: PARASEAL PRODUCTS REQUIRE A MIN 24 PSF OF  
COMPACTION/CONFINEMENT IN ORDER TO FUNCTION AS DESIGNED.

*The architecture, engineering, and design of the project using the Tremco products are the responsibility of the project's design professional. All products and systems must comply with local building codes and standards. This detail is for general information and guidance only and Tremco specifically disclaims any liability for the use of this detail. The project design professional determines, in its sole discretion, whether this detail or a functionally equivalent detail is best suited for the project. This detail is subject to change without notice. Contact Tremco to ensure you have the most recent version.*

**Paraseal GM/LG 20 Mil Blindside Walls**



Tremco Technical Support: 866-209-2404

Detail: Paraseal GM/LG 20 Mil at Transition to Fluid Applied Membrane at Top of Deck

Drawn by: KAB

Checked by: WH

Scale: NTS

Date: 3/29/2022

File Name:

BSW-GM20-T-06

[www.tremcocpg.com](http://www.tremcocpg.com)



Construction Products Group