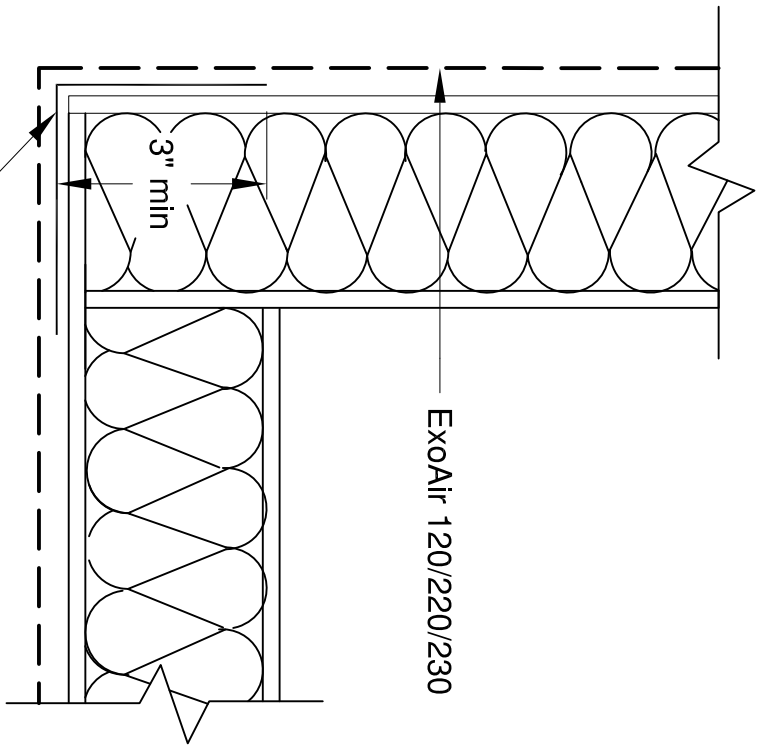
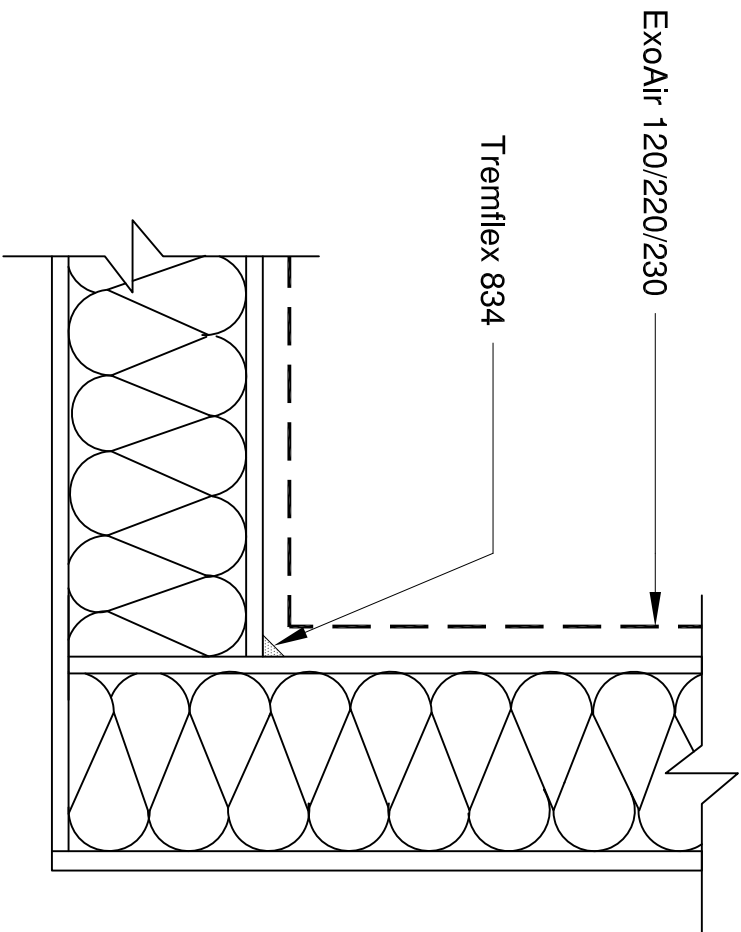


**Outside
Corner**



**Inside
Corner**



30 mil Detail Coat of ExoAir Fluid w/ 3"
Tremco 2011 embedded on each side

Note: This sample detail is for educational purposes only. Appropriate air barrier details vary by geographic location, climatic conditions, air barrier products used in actual design, and anticipated building use. Contact Tremco Technical Services for further assistance.



3735 Green Road * Beachwood, OH 44122
Phone : 866-209-2404 * Fax: 216-766-5535

Detail
**ExoAir Fluids - Exterior Sheathing
Corners - Method B**

Drawing Number
A10052

Drawn by:
MAT

Scale: **None**

Date: **11/09/10**