

EXOAIR 120/130/220/230/230LT

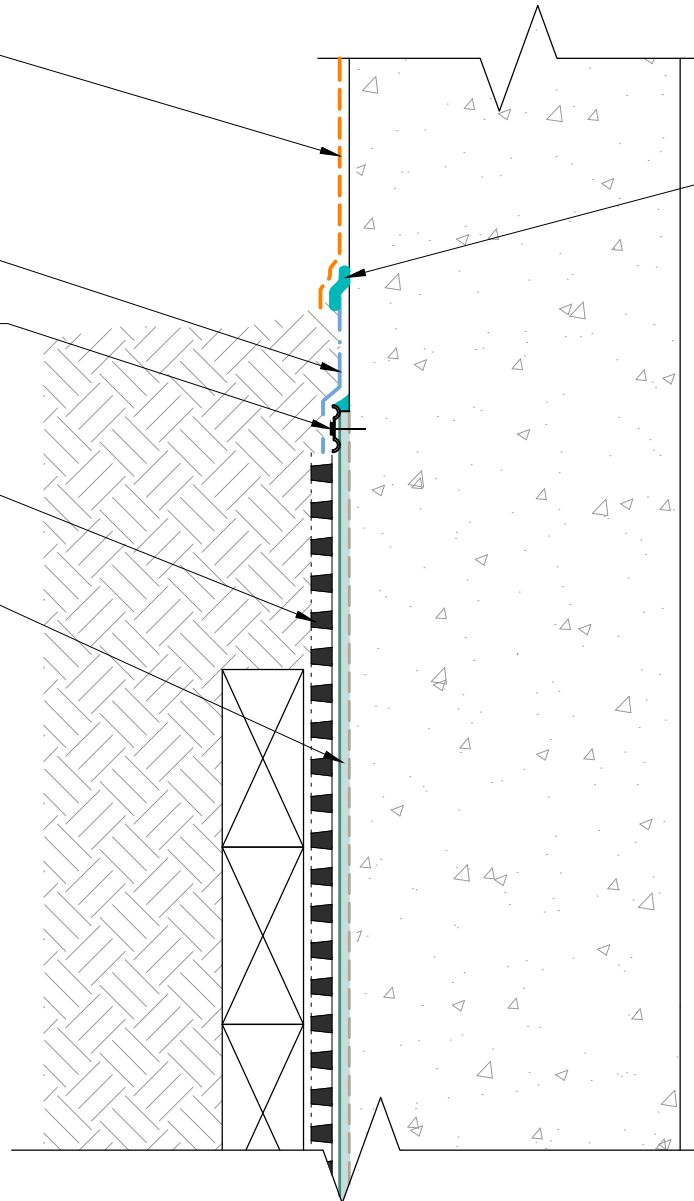
EXOAIR 110AT

PARATERM BAR WITH DYMONIC 100

TREMDRAIN, AS SPECIFIED

TREMPROOF AMPHIBIA, FABRIC
SIDE AGAINST CONCRETE

DYMONIC 100



NOTE: BUILDING FACADE NOT SHOWN FOR CLARITY

The architecture, engineering, and design of the project using the Tremco products are the responsibility of the project's design professional. All products and systems must comply with local building codes and standards. This detail is for general information and guidance only and Tremco specifically disclaims any liability for the use of this detail. The project design professional determines, in its sole discretion, whether this detail or a functionally equivalent detail is best suited for the project. This detail is subject to change without notice. Contact Tremco to ensure you have the most recent version.

TREMProof Amphibia Blindside Walls



Tremco Technical Support: 866-209-2404

Detail: TREMProof Amphibia at Blindside Wall to ExoAir 120/130/220/230/230LT

Drawn by: KAB

Checked by: WH

Scale: NTS

Date: 5/10/2023

File Name:

A-BSW-T-02



Construction Products Group

www.tremcocpg.com