

ExoAir 220/230
Apply ExoAir Primer
to the surface of the
ExoAir TWF prior to
applying the
membrane

ExoAir Termination Mastic

ExoAir TWF, recessed
 $\frac{1}{2}$ " from exterior

Metal Drip Edge
(required)

ExoAir Eco or
illmod 600

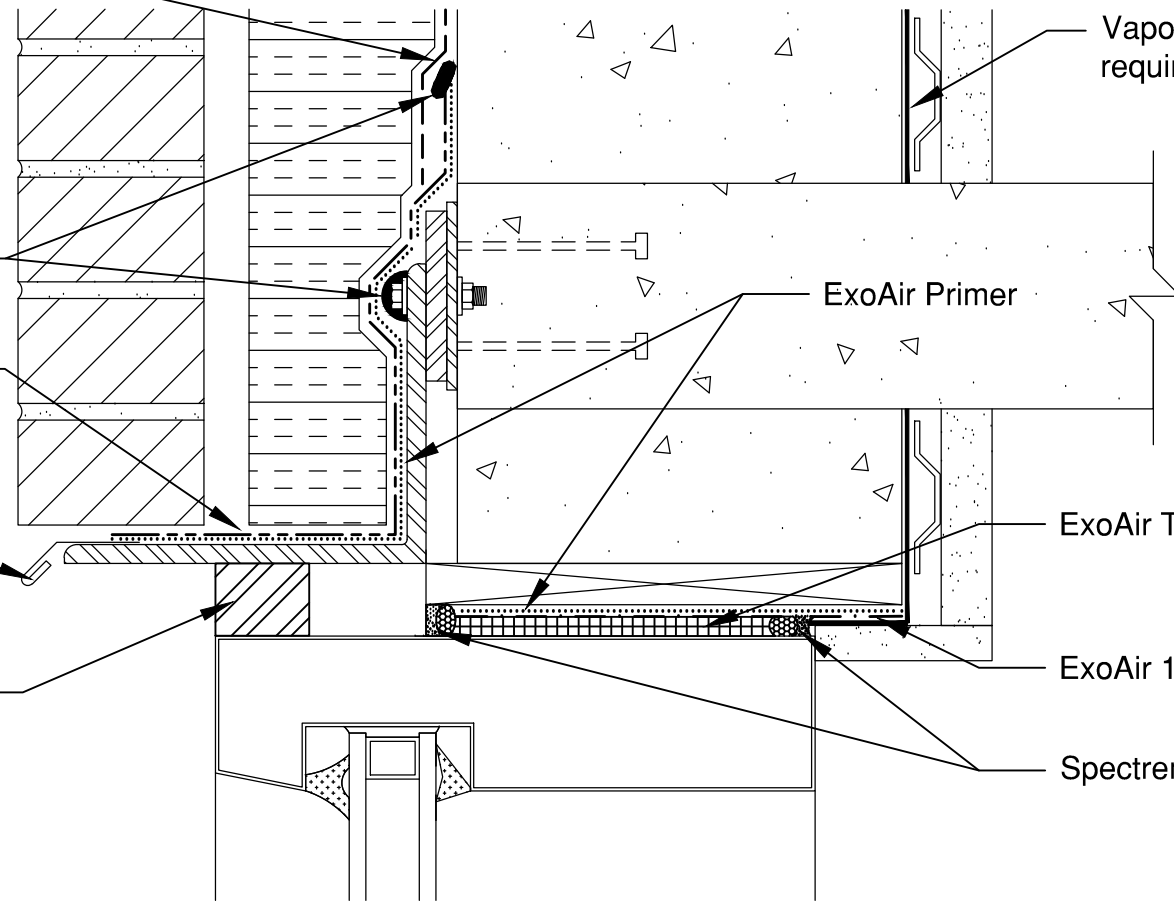
Vapor Barrier (as
required by others)

ExoAir Primer

ExoAir Trio

ExoAir 110

Spectrem 1



This detail is intended for conceptual purposes only.

| Rev | Date | Description | By |
|-----|------|-------------|----|
| - | - | - | - |