

VULKEM® EPOXY WC

Extended-Wear Traffic Coating System with Enhanced Durability vs. Standard Urethane Systems

Product Overview

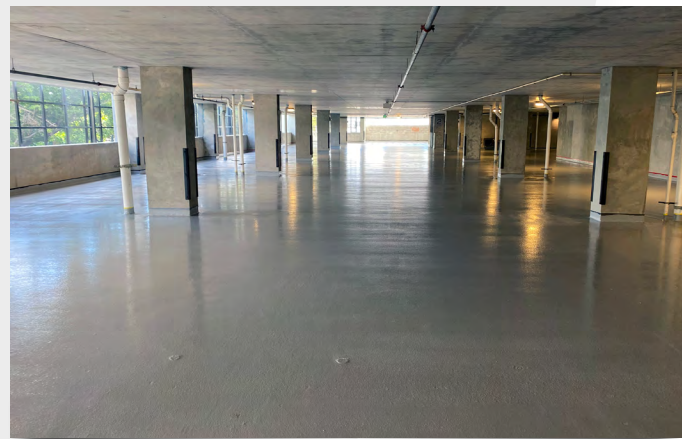
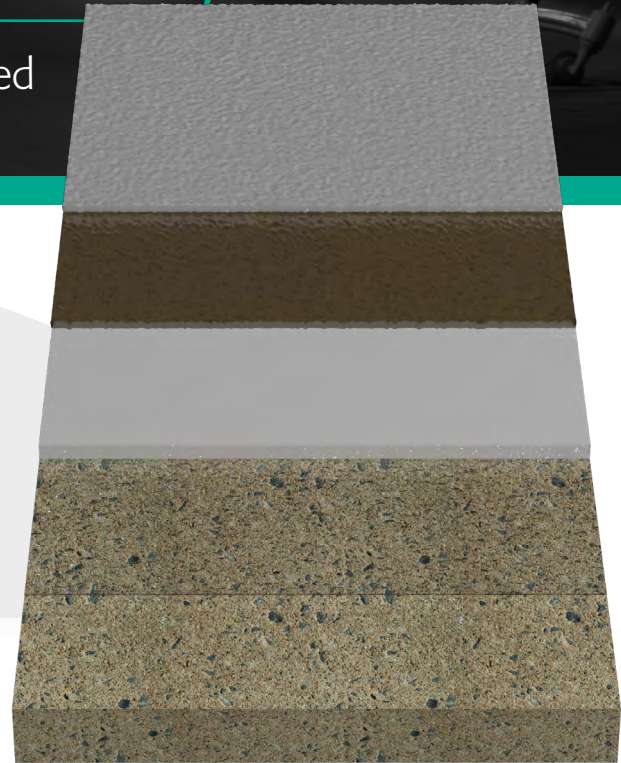
Tremco's Vulkem® Epoxy WC is a vehicular traffic-duty wear coat option providing enhanced durability compared to standard urethane-only systems.

Vulkem Epoxy WC is compatible with all other Vulkem base coat (BC) and top coat (TC) products, making it an ideal solution for enhancing your system's overall durability — while not breaking the budget.

It is also fully compatible with Tremco sealants like Dymonic® 100 and Willseal® pre-compressed foam joint products. And unlike competing epoxy systems, Tremco Vulkem Epoxy WC does not require any tapes or fabrics.

Features & Benefits

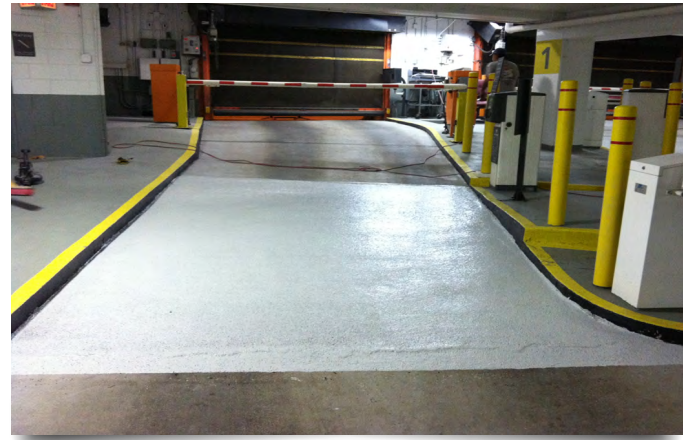
- Two-part epoxy wear coat (WC) provides enhanced durability vs. urethane-only systems
- Compatible with all Tremco Vulkem base coat (BC) and top coat (TC) products to ensure the perfect system fit for your project.
- Extended service life — and warranties — compared to urethane-only systems
- Superior aggregate retention
- Resistant to chemicals, salts, mildew, fungus and other environmental contaminants
- Part of the Tremco Construction Products Group (CPG) family of comprehensive building products for all six sides of the building envelope



Basic Uses

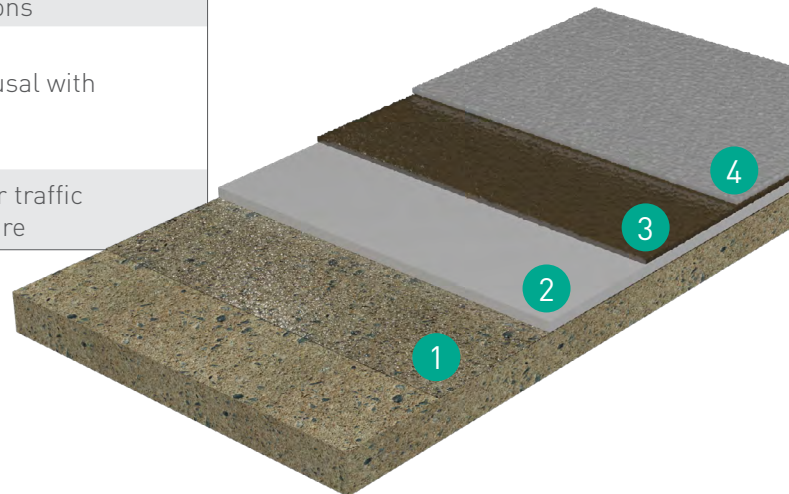
Tremco traffic coating systems with Vulkem® Epoxy WC are an excellent choice for any high-volume traffic areas in revenue-generating structures, including:

- High-wear turning and drive lanes
- Ticket spitters
- Helical ramps
- Stadium/plaza decks
- Parking slabs



On-Site Training, Testing & Tech Support
On-site conditions always vary, presenting challenges on the project. Tremco local technical sales representatives work with installers to provide you the ideal solution. Immediate assistance is also always available by calling our Technical Services Department.

Layer	Wet Mils	Comment
1 Primer <i>(Condition Dependent)</i>	N/A	Contact local Tremco agent
2 Base Coat	25	Allow to cure a minimum of 4 to 8 hr before proceeding under standard conditions
3 <u>or</u> Wear Coat (Medium Duty) Wear Coat (Heavy Duty)	12 16	Broadcast to refusal with silica sand
4 Top Coat	10-12	Open to vehicular traffic 72 hours after cure



For the most up-to-date and comprehensive information, please reference this system's full application instructions at www.tremcosealants.com.

Tremco Commercial Sealants & Waterproofing | 3735 Green Road | Beachwood, OH 44122 | US: 800.852.9068 | CAN: 800.363.3213 | tremcosealants.com

Tremco Construction Products Group (CPG) brings together Tremco Incorporated's Commercial Sealants & Waterproofing and Roofing & Building Maintenance operating divisions; Dryvit Systems, Inc.; Nudura Systems, Inc.; Willseal; Weatherproofing Technologies, Inc. and Weatherproofing Technologies Canada, Inc.



Construction Products Group

Tremco®, Vulkem®, and Dymonic® are registered trademarks of Tremco Incorporated. Use of the ® symbol indicates registration with the US Patent & Trademark Office and the Canadian Intellectual Property Office. 0620/VEWCFBS.

tremcocpg.com