

System No. WW-S-1033

February 24, 2005

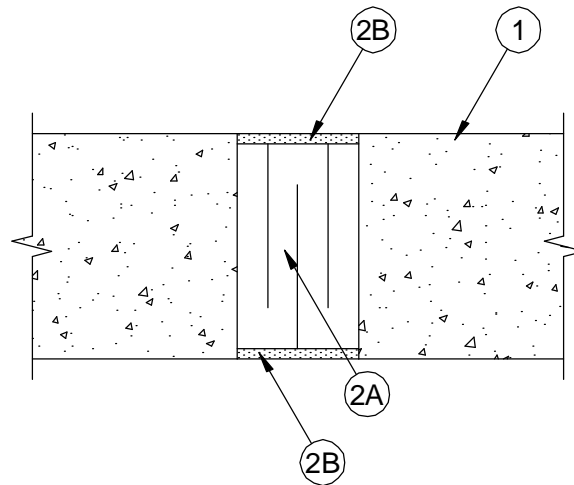
Assembly Rating — 4 Hr

L Rating At Ambient — Less Than 1 CFM/Lin Ft

L Rating At 400 F — Less Than 1 CFM/Lin Ft

Joint Width — 3 In. Max

(UL/cUL)



1. **Wall Assembly** — Min 5-1/2 in. (140 mm) thick reinforced lightweight or normal weight (100 - 150 pcf or 1600-2400 kg/m³) structural concrete. Wall may also be constructed of any UL Classified **Concrete Blocks***.

See **Concrete Blocks** (CAZT) category in the Fire Resistance Directory for names of Manufacturers.

2. **Joint System** — Max width of joint is 3 in. (76 mm). The joint system shall consist of the following:

- A. **Packing Material** — Min 1 in. (25 mm) thick 6.0 pcf (96 kg/m³) ceramic fiber blanket insulation installed in joint opening as a permanent form. Insulation cut and pleated to form a unit 4-1/2 in. (114 mm) deep and installed edge-first into joint opening such that sections of insulation unit are compressed a min of 50 percent. Ceramic blanket to be recessed from both surfaces of wall to accommodate the required thickness of fill material. Adjoining lengths of insulation to be tightly-butted with butted seams spaced a min 36 in. (914 mm) apart along the length of the joint.

TREMCO INC — TREMstop FS Blanket

- B. **Fill, Void or Cavity Material*** — Min 1/2 in. (113 mm) thickness of fill material applied within the joint, flush with both surfaces of wall.

TREMCO INC — Dymeric 240FC

*Bearing the UL Classification Mark



Reprinted from the Online Certifications Directory with permission from Underwriters Laboratories Inc.
Copyright © 2008 Underwriters Laboratories Inc. ®