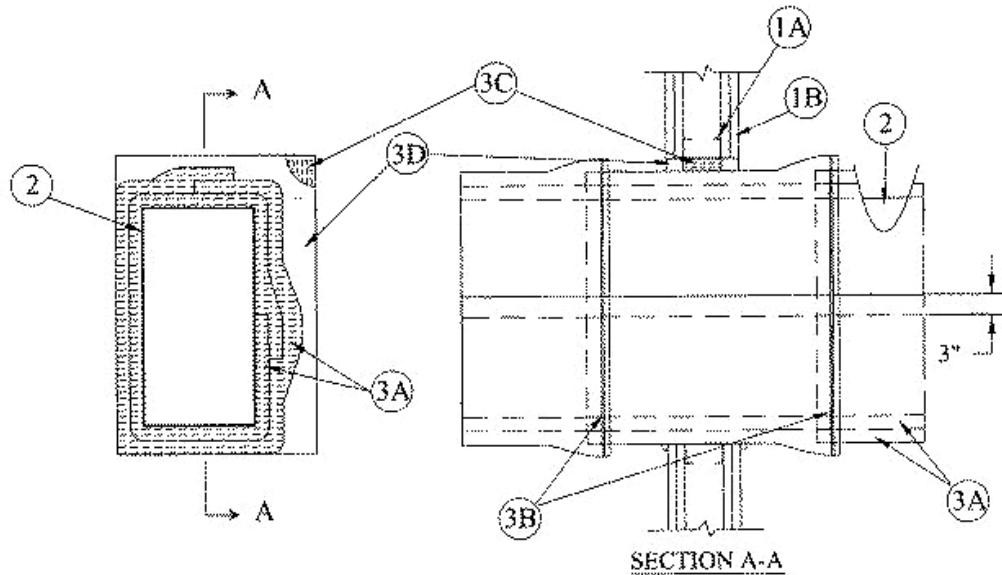


System No. W-L-7041

December 01, 2003

F Ratings — 1 and 2 Hr. (See Item 1)
T Ratings — 1 and 2 Hr. (See Item 1)
(UL/cUL)



1. **Wall Assembly** — The 1 or 2 hr. fire rated wallboard/stud wall assembly shall be constructed of the materials and in the manner specified in the individual U300 or U400 Series Wall and Partition Designs in the UL Fire Resistance Directory and shall include the following construction features.
 - A. **Studs** — Wall framing shall consist of min 3-1/2 in. wide steel studs. Steel studs to be spaced a max 24 in. OC. Additional framing members shall be used to completely frame around opening.
 - B. **Gypsum Board*** — For 1 hr. assembly, one layer of min 5/8 in. thick wallboard as required in the individual Wall and Partition Design. For 2 hr. assembly, two layers of min 5/8 in. thick wallboard as required in the individual Wall and Partition Design. Max diam of opening is 1216 sq. in. with max dimension of 38 in.

The hourly F and T Rating of the firestop system is equal to the hourly fire rating of the wall assembly in which it is installed.
2. **Through Penetrant** — One steel duct to be installed within the firestop system with an annular space. Duct to be rigidly supported on both sides of wall assembly. The following types of through-penetrants may be used:
 - A. **Steel Air Duct** — Min 24 gauge (or heavier) galv steel duct having a max perimeter dimension of 108 in. (or smaller) and a max individual dimension of 30 in.
 - B. **Steel Grease Duct** — Min 16 gauge (0.059 in.) thick carbon steel duct having max perimeter dimension of 108 in. and a max individual dimension of 30 in. **Grease duct assemblies for use only in 2 hr. rated walls.**
3. **Firestop System** — The firestop system shall consist of the following:
 - A. **Duct Wrap Materials*** — Nom 1-1/2 in. thick, 6 pcf, ceramic blanket totally encapsulated within foil-scrim facers. The steel duct shall be wrapped with one or two layers of duct wrap, for 1 and 2 hr. wall assemblies, respectively, installed in accordance with the manufacturer's installation instructions, maintaining min 3 in. transverse and longitudinal overlaps. All cut edges and ends shall be sealed with 3 in. wide pressure sensitive aluminum foil tape. The annular space between the insulated duct and the periphery of the opening shall be min 0 in. (point contact) to max 2 in.

THERMAL CERAMICS INC — FireMaster Duct Wrap or FireMaster Duct Wrap+
 - B. **Steel Banding Straps** — Min 1/2 in. wide by 0.015 in. thick carbon steel banding straps used in conjunction with min 1 in. long stainless steel crimp clips. Banding straps spaced a max 12 in. OC and 1-1/2 in. from transverse joints of duct wrap.

- C. **Packing Material** — Min 3-1/2 in. thickness of unfaced scrap duct wrap material or min 4 pcf mineral wool batt insulation firmly packed into opening as a permanent form between the wrapped steel duct and the periphery of the opening. Packing material to be recessed from both surfaces of wall as required to accommodate the required thickness of fill material.
- D. **Fill, Void or Cavity Material*— Sealant** — Min 5/8 in. and 1-1/4 in. thickness of fill material applied within annulus, flush with both surfaces of wall assembly for 1 or 2 hr. rated walls, respectively. At the point contact location between duct and wallboard, a min 1/2 in. diam bead of sealant shall be applied at the wallboard/duct interface on both surfaces of wall assembly.

TREMCO INC — Fyre-Sil Sealant

*Bearing the UL Classification Mark

+Bearing the UL Recognized Component Mark



Reprinted from the Online Certifications Directory with permission from Underwriters Laboratories Inc.
Copyright © 2008 Underwriters Laboratories Inc. ®