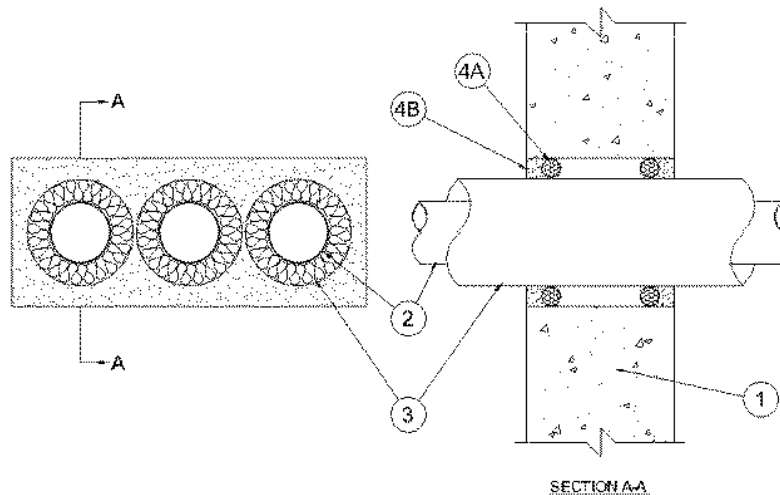


System No. W-J-5001

August 2008
F Rating — 2 Hr
FT Rating — 1/4 Hr
FH Rating — 0 Hr
FTH Rating — 0 Hr
(cUL)



- Wall Assembly** — Min 152 mm (6 in.) thick reinforced lightweight or normal weight (1601-2402 kg/m³ (100-150 pcf) concrete. Wall may also be constructed of any UL Classified **Concrete Blocks***. Max area of opening is 387 sq cm (60 sq in.) with max dimension of 305 mm (12 in.).
See **Concrete Blocks** (CAZT) category in the Fire Resistance Directory for names of manufacturers.
- Through Penetrants** — One or more pipes or tubing to be installed within the opening. The annular space between insulated pipes or tubing shall be min 0 mm (point contact) to max 6 mm (1/4 in.). The annular space between pipes or tubing and periphery of opening shall be min 12 mm (1/2 in.) to max 17 mm (11/16 in.). Pipe or tubing to be rigidly supported on both sides of wall assembly. The following types and sizes of pipes or tubing may be used:
 - Steel Pipe** — Nom 51 mm (2 in.) diam (or smaller) Schedule 10 (or heavier) steel pipe.
 - Iron Pipe** — Nom 51 mm (2 in.) diam (or smaller) cast or ductile iron pipe.
 - Copper Tubing** — Nom 51 mm (2 in.) diam (or smaller) Type L (or heavier) copper tube. D.
 - Copper Pipe** — Nom 51 mm (2 in.) diam (or smaller) Regular (or heavier) copper pipe.
- Tube Insulation*** — **Plastics+** — Nom 20 mm (3/4 in.) thick acrylonitrile butadiene/polyvinyl chloride (AB/PVC) flexible foam furnished in the form of tubing.
See **Plastics+** (QMFZ2) category in the Plastics Recognized Component Directory for names of manufactures. Any Recognized Component tube insulation material meeting the above specifications of having a UL94 Flammability Classification of 94-5VA may be used.
- Firestop System** — The firestop system shall consist of the following:
 - Packing Material** — Foam backer rod firmly packed into opening as a permanent form and recessed from both sides of wall to accommodate required thickness of fill material.
 - Fill Void or Cavity Materials* — Sealant** — Min 12 mm (1/2 in.) thickness of fill material applied within annulus, flush with both surfaces of wall.

TREMCO INC — TREMstop Intumescent Acrylic, TREMstop IA+

*Bearing the UL Classification Mark



Reprinted from the Online Certifications Directory with permission from Underwriters Laboratories Inc.
Copyright © 2008 Underwriters Laboratories Inc. ®