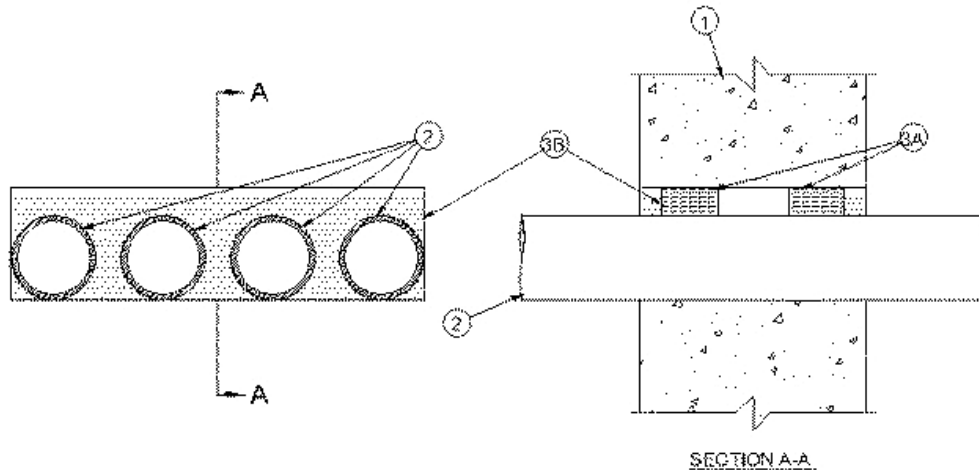


System No. W-J-1129

August 2008
F Rating — 2 Hr
T Rating — 1/4 Hr
(UL/cUL)



- Wall Assembly** — Min 6 in. (152 mm) thick reinforced lightweight or normal weight (100-150 pcf (1600-2400 kg/cu meter)) concrete. Wall may also be constructed of any UL Classified **Concrete Blocks***. Max area of opening is 33 sq in. (213 sq cm) with max dimensions of 11 in. (279 mm).
See **Concrete Blocks** (CAZT) category in the Fire Resistance Directory for names of manufacturers.
- Through Penetrants** — One or more pipes, conduits or tubing to be installed within the opening. The space between pipes, conduits or tubing shall be a nom 1/2 in. (13 mm). The space between pipes, conduits or tubing and periphery of opening shall be min 0 in. (point contact) to max 3/4 in. (19 mm). Pipe, conduit or tubing to be rigidly supported on both sides of wall assembly. The following types and sizes of pipes, conduits or tubing may be used:
 - Steel Pipe** — Nom 2 in. (51 mm) diam (or smaller) Schedule 10 (or heavier) steel pipe.
 - Iron Pipe** — Nom 2 in. (51 mm) diam (or smaller) cast or ductile iron pipe.
 - Conduit** — Nom 2 in. (51 mm) diam (or smaller) steel electrical metallic tubing or rigid steel conduit.
- Firestop System** — The firestop system shall consist of the following:
 - Packing Material** — Min 2-1/2 in. (64 mm) thickness of min 4 pcf (64 kg/cu meter) mineral wool batt insulation compressed and firmly packed into opening as a permanent form. Packing material recessed from both surfaces of wall as required to accommodate the required thickness of fill material.
 - Fill Void or Cavity Materials* — Sealant** — Min 1/2 in. (13 mm) thickness of fill material applied within annulus, flush with both surfaces of wall.

TREMCO INC — TREMstop Acrylic, TREMstop Intumescent Acrylic, Fyre-Sil, FyreCaulk, or TREMstop IA+

*Bearing the UL Classification Mark



Reprinted from the Online Certifications Directory with permission from Underwriters Laboratories Inc.
Copyright © 2008 Underwriters Laboratories Inc. ®