

## System No. SP180

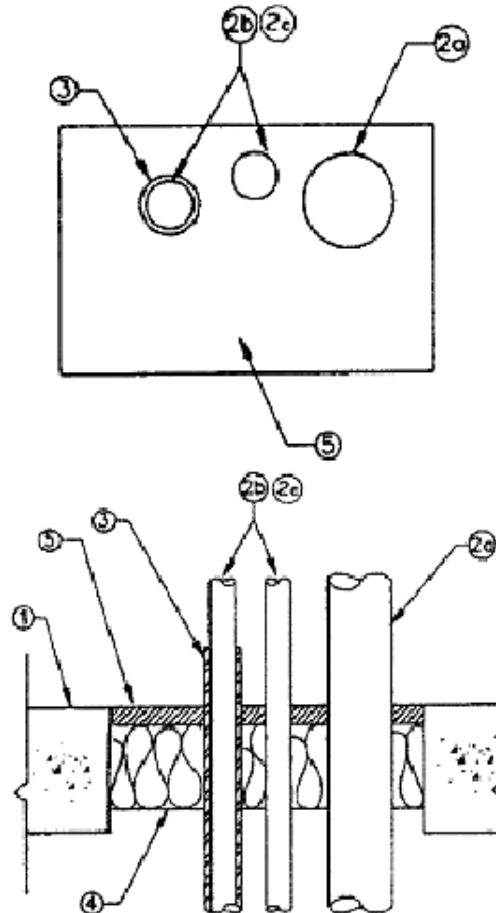
March 08, 2004

(For Horizontal or Vertical Separations)

F Rating - 2 h

FH Rating - 1-1/2 & 2 h (See Item 5)

FT and FTH Ratings - 0 h  
(ULC)



1. **Floor or Wall** – Min depth or thickness as necessary for required grade of fire separation but not less than 115 mm. Normal-density ( $2400 \pm 50 \text{ kg/m}^3$ ) concrete floor or wall, or nom 200 mm concrete block wall. Max size of opening 305 mm by 610 mm.  
For opening in concrete block wall, concrete or mortar shall be used to create a solid surround to the opening.
2. **Pipes** – All pipes to be reliably supported above through-opening. Min distance of 13 mm between pipes and edge of opening.
  - A. **Steel Pipe** – 220 mm OD max and 8.4 mm min wall thickness.
  - B. **Copper Pipe** – 106 mm OD max and 1.3 mm min wall thickness.
  - C. **Galvanized Steel Pipe** – 115 mm OD max and 2.1 mm min wall thickness.
3. **Pipe Insulation** – Copper Pipe (Item 2b) to be wrapped with min 25 mm thick ULC labeled mineral wool pipe insulation (Guide No. 40 U8.15.13). No pipe insulation joints to be located closer than 50 mm to concrete floor surfaces.
- 4A. **Batts and Blankets** – Mineral wool insulation, min  $81 \text{ kg/m}^3$  density, compressed into opening to a depth of 89 mm. Grain of insulation to be perpendicular to plane of floor or wall. Material to be compressed at least 25% and recessed from top surface of floor slab or both wall surfaces to accommodate required depth of sealant (Item 5).

- 4B. Firestop System Component** — (Guide No. 40 U19.13). Type "RXL-Safe" mineral wool insulation compressed into opening to a depth of 89 mm. Grain of insulation to be perpendicular to plane of floor or wall. Material to be compressed at least 25% and located min 13 mm below surface of floor slab or recessed 13 mm from wall surfaces.

**ROXUL INC.**

- 5. Firestop System Components** — (Guide No. 40 U19.13).

- A.** Type "Fyre-Sil" sealant applied over insulation (Item 4) to a min depth of 13 mm. When min 81 kg/m<sup>3</sup> density insulation (Item 4a) is packed to a min depth of 108 mm, min sealant depth is 6 mm. Sealant to be applied to both sides of the system for vertical separations.
- B.** For horizontal separations only, Type "Fyre-Sil SL" sealant applied over insulation (Item 4) to a min depth of 13 mm flush with the surface of the slab. When min 81 kg/m<sup>3</sup> density insulation (Item 4a) is packed to a min depth of 108 mm, min sealant depth is 6 mm.

Type of Penetrating Item	FT Rating, h
No penetrating item	2
Pipe, Item 2a	0
Pipe, Items 2b and 2c	0
Pipe, Item 2b insulated	1-1/2

**TREMCO LTD.**



Reprinted from the Online Certifications Directory with permission from Underwriters Laboratories Inc.  
Copyright © 2008 Underwriters Laboratories Inc. ®

**Tremco Commercial Sealants & Waterproofing**

3735 Green Road, Beachwood, OH 44122 // Phone: 216.292.5000 // 800.321.7906  
220 Wicksteed Avenue, Toronto, ON M4H 1G7 // Phone: 416.421.3300 // 800.363.3213  
1451 Jacobson Avenue, Ashland OH 44805 // Phone: 419.289.2050 // 800.321.6357



Reprinted from the Online Certifications Directory with permission from Underwriters Laboratories Inc.  
Copyright © 2008 Underwriters Laboratories Inc. ®

---

### **Tremco Commercial Sealants & Waterproofing**

3735 Green Road, Beachwood, OH 44122 // Phone: 216.292.5000 // 800.321.7906  
220 Wicksteed Avenue, Toronto, ON M4H 1G7 // Phone: 416.421.3300 // 800.363.3213  
1451 Jacobson Avenue, Ashland OH 44805 // Phone: 419.289.2050 // 800.321.6357