

## System No. HW-S-1011

February 24, 2005

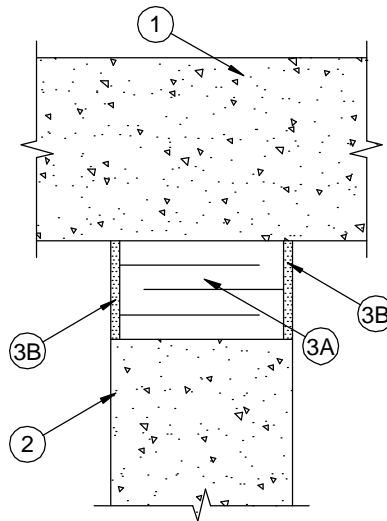
Assembly Rating - 4 Hr

L Rating at Ambient - Less than 1 CFM/Lin Ft

L Rating at 400° F - Less than 1 CFM/Lin Ft

Joint Width - 3 In. Max

(UL/cUL)



1. **Floor Assembly** – Min 5-1/2 in. (140 mm) thick reinforced lightweight or normal weight (100-150 pcf or 1600-2400 kg/m<sup>3</sup>) structural concrete.
2. **Wall Assembly** – Min 5-1/2 in. (140 mm) thick reinforced lightweight or normal weight (100-150 pcf or 1600-2400 kg/m<sup>3</sup>) structural concrete. Wall may also be constructed of any UL Classified **Concrete Blocks\***.  
See **Concrete Blocks** (CAZT) category in the Fire Resistance Directory for names of manufacturers.
3. **Joint System** – Max width of joint is 3 in. (76 mm). The joint system shall consist of the following:
  - A. **Forming Material\*** – Min 1 in. (25 mm) thick 6.0 pcf (96 kg/m<sup>3</sup>) ceramic fiber blanket insulation installed in joint opening as a permanent form. Insulation cut and pleated to form a unit 4-1/2 in. (114 mm) deep and installed edge-first into joint opening such that sections of insulation unit are compressed a min of 50 percent. Ceramic blanket to be recessed from both surfaces of wall to accommodate the required thickness of fill material. Adjoining lengths of insulation to be tightly-butted with butted seams spaced min 36 in. (914 mm) apart along the length of the joint.  
**TREMCO INC** – TREMstop FS Blanket
  - B. **Fill, Void or Cavity Material\*** – Min 1/2 in. (13 mm) thickness of fill material applied within the joint, flush with both surfaces of wall.  
**TREMCO INC** – Dymeric 240FC

\*Bearing the UL Classification Mark



Reprinted from the Online Certifications Directory with permission from Underwriters Laboratories Inc.  
Copyright © 2008 Underwriters Laboratories Inc. ®