

## System No. HW-S-0061

October 01, 2004

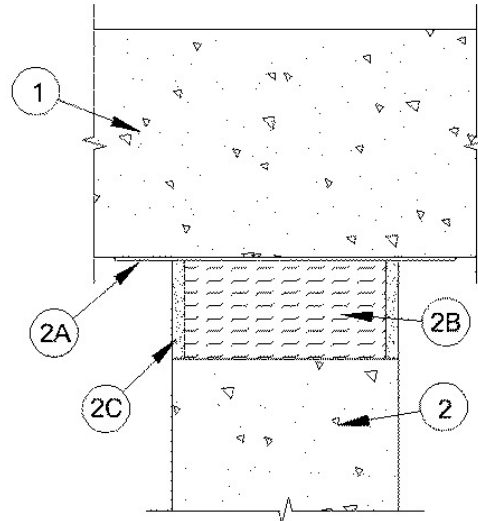
F Rating – 2 Hr

L Rating at Ambient – Less than 1 CFM/L in. Ft

L Rating at 400°F – Less than 1 CFM/L in. Ft

Joint Width – 2 In. Max

(UL/cUL)



1. **Floor Assembly** – Min 4-1/2 in. (114 mm) thick reinforced lightweight or normal weight (100-150 pcf (1600-2400 kg/cu meter)) structural concrete.
2. **Wall Assembly** – Min 4-1/2 in. (114 mm) thick reinforced lightweight or normal weight (100-150 pcf (1600-2400 kg/cu meter)) structural concrete. Wall may also be constructed of any UL Classified Concrete Blocks\*.  

See **Concrete Blocks** (CAZT) category in the Fire Resistance Directory for names of manufacturers.
3. **Joint System** – Max width of joint is 2 in. (51 mm). The joint system shall consist of the following:
  - A. **Membrane\*** – Self-adhesive membrane cut to min 6-1/2 in. (140 mm) width and applied to either inside surface of joint. When membrane is applied to bottom surface of floor, it shall extend min 1 in. on floor surface beyond each face of joint. When membrane is applied to wall, it shall overlap min 1 in. onto each surface of wall. Adjoining lengths of membrane to be provided with max 2 in. (50 mm) end laps spaced min 40 in. (1016 mm) apart along length of joint.  

**HENRY CO** – Blueskin SA or SA-LT
  - B. **Packing Material\*** – Min 4.0 pcf (64 kg/cu meter) mineral wool insulation installed in joint opening as a permanent form. Pieces of batt cut to min width of 4 in. (102 mm) and installed edge-first into the joint opening, parallel with the joint direction, such that batt sections are compressed min 50 percent in thickness and that the compressed batt sections are recessed from both surfaces of wall as required to accommodate the required thickness of fill material. Adjoining lengths of batt to be tightly-butted with butted seams spaced min 36 in. (914 mm) apart along the length of the joint.  

**FIBREX INSULATIONS INC** – FBX Safing Insulation  
**ROCK WOOL MANUFACTURING CO** – Delta Safing Board
  - C. **Fill, Void or Cavity Material\*** – Min 1/4 in. (6 mm) thickness of fill material applied within the joint, flush with both surfaces of wall.  

**TREMCO INC** – Fyre-Sil

\*Bearing the UL Classification Mark



Reprinted from the Online Certifications Directory with permission from Underwriters Laboratories Inc.  
Copyright © 2008 Underwriters Laboratories Inc. ®