

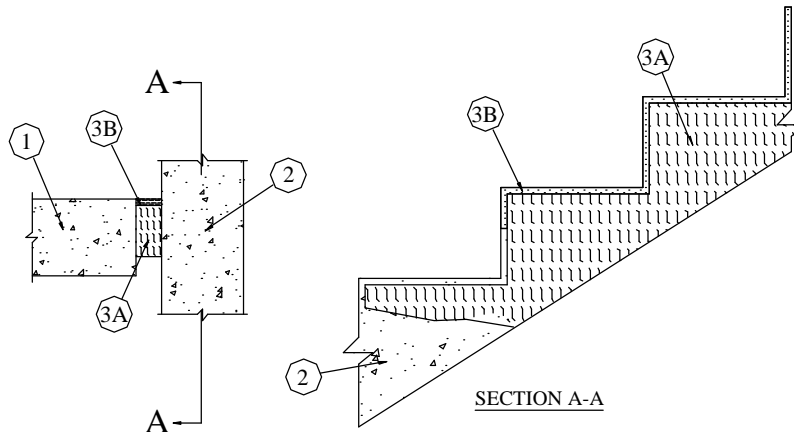
System No. FW-D-0033

July 08, 2003

Assembly Rating - 3 Hr

Joint Width - 2 In. Maximum

Class I and II Movement Capabilities - 18% Compression or Extension
(UL/cUL)



1. **Wall Assembly** — Min 6 in. (152 mm) thick reinforced lightweight or normal weight (100-150 pcf (1600-2400 kg/m³)) structural concrete. Wall may also be constructed of any UL Classified **Concrete Blocks***.
See **Concrete Blocks** (CAZT) category in the Fire Resistance Directory for names of manufacturers.
2. **Stair Assembly** — Min 6 in. (152 mm) thick reinforced lightweight or normal weight (100-150 pcf (1600-2400 kg/m³)) structural concrete.
3. **Joint System** — Max width of joint is 2 in. (51 mm). The joint system shall consist of the following:
 - A. **Packing Material** — Min 4 in. (102 mm) thickness of min 4 pcf (64 kg/m³) mineral wool batt insulation installed in joint opening as a permanent form. Pieces of batt cut to min width of 4 in. and installed edge- first into joint opening, parallel with joint direction, such that batt sections are compressed min 50 percent in thickness, and recessed from top surface of stair assembly as required to accommodate the required thickness of fill material.
FIBREX INSULATIONS INC — FBX Safing Insulation
ROCK WOOL MANUFACTURING CO — Delta Board
 - B. **Fill, Void or Cavity Material*** — Min 1/2 in. (12 mm) thickness of fill material applied within the joint, flush with top surface of stair assembly.
TREMCO INC — Fyre-Sil

*Bearing the UL Classification Mark



Reprinted from the Online Certifications Directory with permission from Underwriters Laboratories Inc.
Copyright © 2008 Underwriters Laboratories Inc. ®