

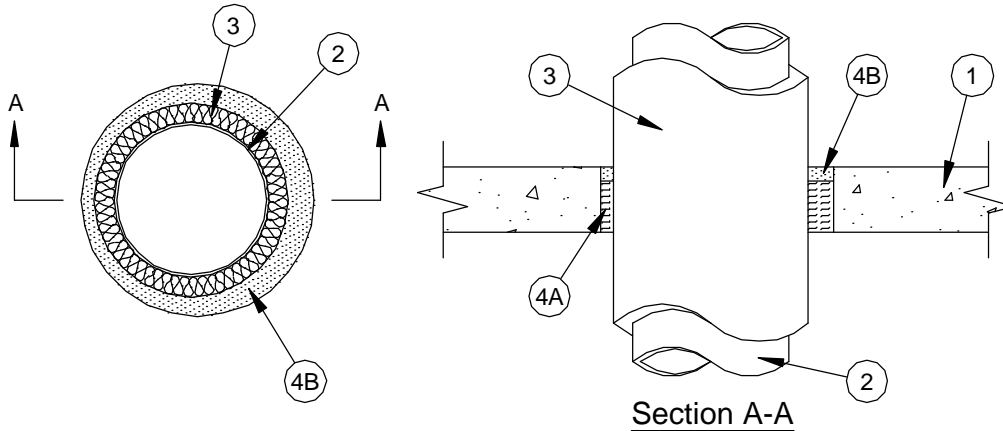
## System No. C-AJ-5287

August 2008

F Rating — 2 Hr

T Rating — 1/2 Hr

L Rating at Ambient - Less Than 1 CFM/sq ft  
(UL/cUL)



- Floor or Wall Assembly** — Min 2-1/2 in. (64 mm) thick reinforced lightweight or normal weight (100-150 pcf or 1600-2400 kg/m<sup>3</sup>) concrete floor or min 5 in. (127 mm) thick reinforced lightweight or normal weight concrete wall. Wall may also be constructed of any UL Classified **Concrete Blocks\***. Max diam of opening is 9-5/8 in. (244 mm).  
See **Concrete Blocks** (CAZT) category in the Fire Resistance Directory for names of manufacturers.
- Through Penetrants** — One metallic pipe or tubing to be installed either concentrically or eccentrically within the firestop system. Pipe or tubing to be rigidly supported on both sides of floor or wall assembly. The following types and sizes of metallic pipes or tubing may be used:
  - Steel Pipe** — Nom 6 in. (152 mm) diam (or smaller) Schedule 10 (or heavier) steel pipe.
  - Iron Pipe** — Nom 6 in. (152 mm) diam (or smaller) cast or ductile iron pipe.
  - Copper Tubing** — Nom 4 in. (102 mm) diam (or smaller) Type L (or heavier) copper tubing.
  - Copper Pipe** — Nom 4 in. (102 mm) diam (or smaller) Regular (or heavier) copper pipe.
- Tube Insulation — Plastics+** — Nom 3/4 in. (19 mm) thick acrylonitrile butadiene/polyvinyl chloride (AB/PVC) flexible foam furnished in the form of tubing. The annular space between pipe covering and periphery of opening shall be min 1/2 in. (13 mm) to max 1 in. (25 mm).  
See **Plastics** (QMFZ2) category in the Plastics Recognized Component Directory for names of manufacturers. Any Recognized Component tube insulation material meeting the above specifications and having a UL 94 Flammability Classification of 94-5VA may be used.
- Firestop System** — The firestop system shall consist of the following:
  - Packing Material** — Min 2 in. (51 mm) thickness of min 4 pcf (64 kg/m<sup>3</sup>) mineral wool batt insulation firmly packed into opening as a permanent form. Packing material to be recessed from top surface of floor or from both surfaces of wall to accommodate the required thickness of fill material.
  - Fill, Void or Cavity Material\* — Caulk** — Min. 1/2 in. (13 mm) thickness of fill material applied within the annulus flush with top surface of floor or both surfaces of wall.

**TREMCO INC** — TREMstop Intumescent Acrylic, FyreCaulk, or TREMstop IA+

\*Bearing the UL Classification Mark



Reprinted from the Online Certifications Directory with permission from Underwriters Laboratories Inc.  
Copyright © 2008 Underwriters Laboratories Inc. ®