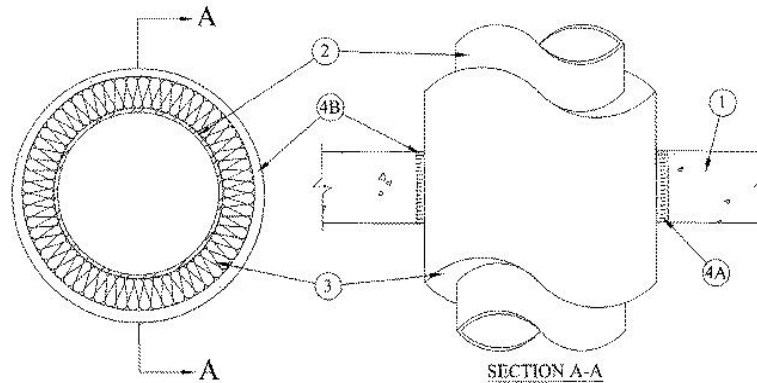


System No. C-AJ-5067

April 21, 2000

F Ratings — 1-1/2 Hr and 2 Hr (See Item 4)

T Ratings — 1/2, 1 & 1-1/2 Hr
(UL/cUL)



- Floor or Wall Assembly** Min 4-1/2 in. thick reinforced lightweight or normal weight (100-150 pcf) concrete floor or min 4-3/4 in. thick reinforced lightweight or normal weight concrete wall. Wall may also be constructed of any UL Classified **Concrete Blocks***. Max diam of opening is 16 in.

See **Concrete Blocks** (CAZT) category in the Fire Resistance Directory for names of manufacturers.

- Through Penetrants** One metallic pipe, conduit or tubing to be installed either concentrically or eccentrically within the firestop system. Pipe, conduit or tubing to be rigidly supported on both sides of floor or wall assembly. The following types and sizes of metallic pipes, conduits or tubing may be used:
 - Steel Pipe** Nom 10 in. diam (or smaller) Schedule 10 (or heavier) steel pipe.
 - Copper Tubing** Nom 4 in. diam (or smaller) Type M (or heavier) copper tubing.
 - Copper Pipe** Nom 4 in. diam (or smaller) Regular (or heavier) copper pipe.
- Pipe Covering*** Hollow cylindrical heavy density (min 3.5 pcf) glass fiber units jacketed on the outside with an all service jacket. Longitudinal joints sealed with metal fasteners or factory-applied self-sealing lap tape. Transverse joints secured with metal fasteners or with butt tape supplied with the product. The annular space and thickness are specified in the table below.

See **Pipe and Equipment Covering — Materials** (BRGU) category in the Building Materials Directory for names of manufacturers. Any pipe covering material meeting the above specifications and bearing the UL Classification Marking with a Flame Spread Index of 25 or less and a Smoke Developed Index of 50 or less may be used.

- Firestop System** The F and T Ratings of the system is dependent upon the pipe type, pipe diam, thickness of pipe covering, annular space, packing material thickness, and fill material thickness as shown in the table below:

Type of Pipe	Max Pipe Diam In.	Thkns of Pipe Covering In.	Annular Space In.	Min Packing Mtl Thkns In.	Min Fill Mtl Thkns In.	F Rating Hr	T Rating Hr
SP, CT, CP	3	1	1/4 to 1-3/8	3-1/2	1/2	1-1/2	1/2
SP, CT, CP	3	1	1/4 to 5/8	3-1/2	1/4	1-1/2	1/2
SP, CT, CP	4	1/2	1/4 to 5/8	4-1/4	1/4	2	1/2
SP	10	1	1/2 to 1	4-1/4	1/4	2	1
SP	10	2	1/2 to 3/4	4-1/4	1/4	1-1/2	1-1/2

SP = Steel Pipe, CT = Copper Tube, CP = Copper Pipe.

- A. **Packing Material** Mineral wool batt insulation having a min density of 4.0 pcf firmly packed into opening as a permanent form at the min thickness specified in the above table (Item 4). Packing material to be recessed from top surface of floor or from both surfaces of wall as required to accommodate the required thickness of fill material.
- B. **Fill, Void or Cavity Material* – Caulk** Min thickness of fill material as specified in the above table (Item 4) applied within the annulus, flush with top surface of floor or with both surfaces of the wall.

TREMCO INC – Fyre-Sil Caulk (floors or walls) and Fyre-Sil S.L. (floors only)

*Bearing the UL Classification Marking



Reprinted from the Online Certifications Directory with permission from Underwriters Laboratories Inc.
Copyright © 2008 Underwriters Laboratories Inc. ®