

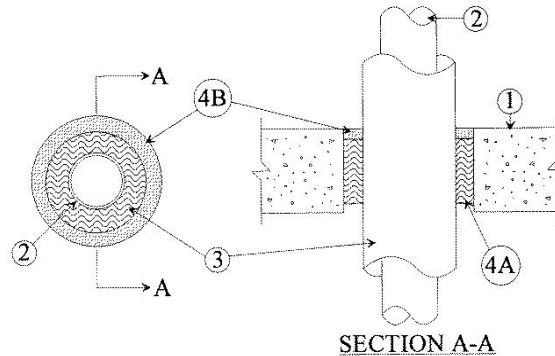
System No. C-AJ-5053

November 23, 2002

F Rating — 2 Hr

T Rating — 0 Hr

(UL/cUL)



1. **Floor or Wall Assembly** — Min 4-1/2 in. thick reinforced normal weight (140-150 pcf) concrete. Wall may also be constructed of any UL Classified **Concrete Blocks***. Max diam of opening is 7 in.

See **Concrete Blocks** (CAZT) category in the Fire Resistance Directory for names of manufacturers.

2. **Through Penetrants** — One metallic pipe or tubing to be centered within the firestop system. Pipe or tubing to be rigidly supported on both sides of floor or wall assembly. The following types and sizes of metallic pipes or tubing may be used:
 - A. **Steel Pipe** — Nom 3 in. diam (or smaller) Schedule 10 (or heavier) steel pipe.
 - B. **Copper Tubing** — Nom 3 in. diam (or smaller) Type K (or heavier) copper tubing.
 - C. **Copper Pipe** — Nom 3 in. diam (or smaller) Regular (or heavier) copper pipe.
3. **Pipe Covering Materials*** — Used in conjunction with Item 3A. Nom 3 in. thick unfaced mineral fiber pipe insulation sized to the outside diam of pipe or tube. Pipe insulation secured with min 8 AWG steel wire spaced max 12 in. OC. An nom annular space of 7/8 in. is required within the firestop system.

IIG MINWOOL L L C — High Temperature Pipe Insulation 1200, High Temperature Pipe Insulation BWT or High Temperature Pipe Insulation Thermaloc

3A. **Sheathing Material** — (Not Shown) — Used in conjunction with Item 3. Foil-scrim-kraft or all service jacket material shall be wrapped around the outer circumference of the pipe covering material (Item 3) with the kraft side exposed. Longitudinal joints sealed with metal fasteners.

See **Sheathing Materials** (BVDV) category in the Building Materials Directory for names of manufacturers. Any sheathing material meeting the above specifications and bearing the UL Classification Marking with a Flame Spread Index of 25 or less and a Smoke Developed Index of 50 or less may be used.

4. **Firestop System** — The firestop system shall consist of the following:
 - A. **Packing Material** — Min 3-1/2 in. thickness of min 3.0 pcf mineral wool batt insulation firmly packed into opening as a permanent form. Packing material to be recessed from top surface of floor or from both surfaces of wall as required to accommodate the required thickness of fill material.
 - B. **Fill, Void or Cavity Material* — Caulk** — Min 1/4 in. thickness of fill material applied within the annulus, flush with top surface of floor or with both surfaces of wall.

TREMCO INC — Fyre-Sil

*Bearing the UL Classification Mark



Reprinted from the Online Certifications Directory with permission from Underwriters Laboratories Inc.
Copyright © 2008 Underwriters Laboratories Inc. ®