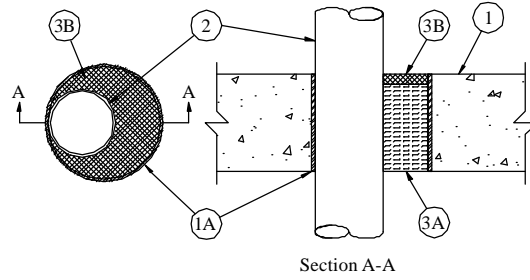


## System No. C-AJ-1302

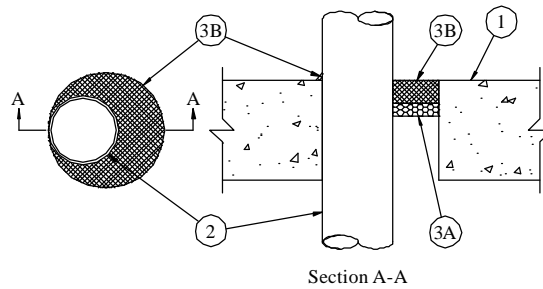
August 2008

F Ratings - 2 and 3 Hr (See Item 3)

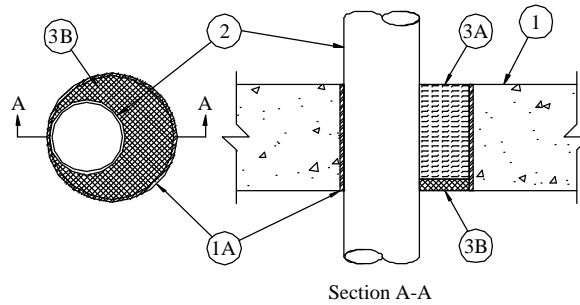
T Rating — 0 Hr  
(UL/cUL)



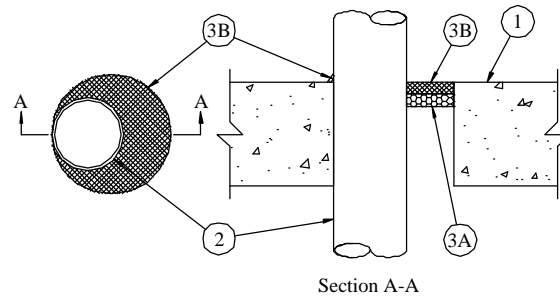
Configuration A



Configuration B



Configuration C



Configuration D

1. **Floor or Wall Assembly** – Min 4-1/2 in. thick reinforced lightweight or normal weight (100-150 pcf) concrete floor or min 4-1/2 in. thick reinforced lightweight or normal weight concrete wall. The min thickness of the wall is dependent upon the firestop configuration as shown in Item 3. Wall may also be constructed of any UL Classified **Concrete Blocks\***. Floor may also be constructed of any min 6 in. thick UL Classified hollow-core **Precast Concrete Units\***. If the firestop system is installed within a hollow-core precast concrete unit, max diam of opening shall be 7 in. Otherwise, max diam of opening is 15-1/4 in.

See **Concrete Blocks** (CAZT) and **Precast Concrete Units** (CFTV) categories in the Fire Resistance Directory for names of manufacturers.

- 1A. **Metallic Sleeve** – (Optional) –Nom 14 in. diam (or smaller) Schedule 10 (or heavier) steel sleeve cast or grouted into floor or wall assembly, flush with floor or wall surfaces. As an option, sleeve may extend max 2 in. above top surface of floor or beyond one or both surfaces of wall. The use of the steel sleeve is dependent upon the firestop configuration as shown in Item 3.
2. **Through Penetrants** – One metallic pipe, conduit or tubing to be installed either concentrically or eccentrically within the firestop system. The annular space the between pipe, conduit or tubing and periphery of opening is dependent upon the type and max diam of through penetrant and the firestop configuration as shown in Item 3. Pipe, conduit or tubing to be rigidly supported on both sides of floor or wall assembly. The following types and sizes of metallic pipes, conduits or tubing may be used:
- A. **Steel Pipe** – Nom 12 in. diam (or smaller) Schedule 10 (or heavier) steel pipe.
  - B. **Iron Pipe** – Nom 12 in. diam (or smaller) cast or ductile iron pipe.
  - C. **Conduit** – Nom 4 in. diam (or smaller) steel electrical metallic tubing or nom 6 in. diam (or smaller) steel conduit.
  - D. **Copper Tubing** – Nom 6 in. diam (or smaller) Type L (or heavier) copper tubing.
  - E. **Copper Pipe** – Nom 6 in. diam (or smaller) Regular (or heavier) copper pipe.

3. **Firestop System** – The F Rating of the firestop system is dependent upon the min thickness of the wall, type and max nom diam of the through penetrant, min and max annular space within the firestop system and the firestop configuration as shown in the table below:

Min Thickness of Wall, In	Type of Through Penetrant	Max Nom Diam of Through Penetrant, In.	Use of Steel Sleeve	Min, Max Annular, In.	Firestop Configuration	F Rating, Hr
4-3/4	Steel Pipe & Iron Pipe	12	Optional	0, 2	A	3
4-3/4	Steel Conduit, Copper Tube & Copper Pipe	6	Optional	0, 2	A	3
4-3/4	Steel EMT	4	Optional	0, 2	A	3
4-1/2	Steel Pipe & Iron Pipe	12	Not Applicable	0, 2	B	2
4-1/2	Steel Conduit, Copper Tube & Copper Pipe	6	Not Applicable	0, 2	B	2
4-1/2	Steel EMT	4	Not Applicable	0, 2	B	2
5-1/4	Steel Pipe & Iron Pipe	8	Optional	0, 2	C	3
5-1/4	Steel Conduit, Copper Tube, Copper Pipe & Steel EMT	4	Optional	0, 2	C	3
4-1/2	Steel Pipe & Iron Pipe	8	Not Applicable	0, 7/8	D	2
4-1/2	Steel Conduit, Copper Tube, Copper Pipe & Steel EMT	4	Not Applicable	0, 7/8	D	2

The firestop system shall consist of the following:

### Configuration A

- A. **Packing Material** — Min 4-1/4 in. thickness of 4 pcf mineral wool batt insulation firmly packed into opening as a permanent form. Packing material to be recessed from top surface of floor or top end of sleeve or from both surfaces of wall and hollow-core pre-cast concrete units or ends of sleeve as required to accommodate the required thickness of fill material.
- B. **Fill, Void or Cavity Material\* — Caulk** — Min 1/4 in. of fill material applied within the annulus, flush with top surface of floor or top end of sleeve, or with both surfaces of wall and hollow-core precast concrete units or ends of sleeve.

TREMCO INC — TREMstop Intumescent Acrylic, TREMstop IA+, or FyreCaulk

### Configuration B

- A. **Packing Material** — Foam backer rod firmly packed into opening as a permanent form. Packing material to be recessed from top surface of floor or both surfaces of wall and hollow-core precast concrete units as required to accommodate the required thickness of fill material.
- B. **Fill, Void or Cavity Material\* — Caulk** — Min 1 in. thickness of fill material applied within the annulus, flush with top surface of floor or with both surfaces of wall and hollow-core precast concrete units. A min 1/4 in. bead of fill material shall be applied at point contact location on top surface of floor and both surfaces of wall or hollow-core precast concrete units.

TREMCO INC — TREMstop Intumescent Acrylic, TREMstop IA+, or FyreCaulk

### Configuration C

- A. **Packing Material** — Min 3-3/4 in. thickness of 4 pcf mineral wool batt insulation firmly packed into opening as a permanent form. Packing material shall be recessed 3/4 in. from bottom of floor or both surfaces of wall or ends of sleeve to accommodate the required thickness of fill material.
- B. **Fill, Void or Cavity Material\* — Caulk** — Min 3/4 in. thickness of fill material applied within the annulus, flush with bottom surface of floor or with both surfaces of wall or ends of sleeve.

TREMCO INC — TREMstop Intumescent Acrylic, TREMstop IA+, or FyreCaulk

### Configuration D

- A. **Packing Material** — Foam backer rod firmly packed into opening as a permanent form. Packing material to be recessed from top surface of floor or both surfaces of wall and hollow-core precast concrete units as required to accommodate the required thickness of fill material.
- B. **Fill, Void or Cavity Material\* — Caulk** — Min 1/2 in. thickness of fill material applied within the annulus, flush with top surface of floor or with both surfaces of wall and hollow-core precast concrete units. A min 1/4 in. bead of fill material shall be applied at point contact location on top surface of floor and both surfaces of wall or hollow-core precast concrete units.

TREMCO INC — TREMstop Intumescent Acrylic, TREMstop IA+, or FyreCaulk

**Note: For any configuration where FyreCaulk is used, the maximum F Rating is 2 Hour.**

\*Bearing the UL Classification Mark



Reprinted from the Online Certifications Directory with permission from Underwriters Laboratories Inc.  
Copyright © 2008 Underwriters Laboratories Inc. ®

### Tremco Commercial Sealants & Waterproofing

3735 Green Road, Beachwood, OH 44122 // Phone: 216.292.5000 // 800.321.7906  
220 Wicksteed Avenue, Toronto, ON M4H 1G7 // Phone: 416.421.3300 // 800.363.3213  
1451 Jacobson Avenue, Ashland OH 44805 // Phone: 419.289.2050 // 800.321.6357