

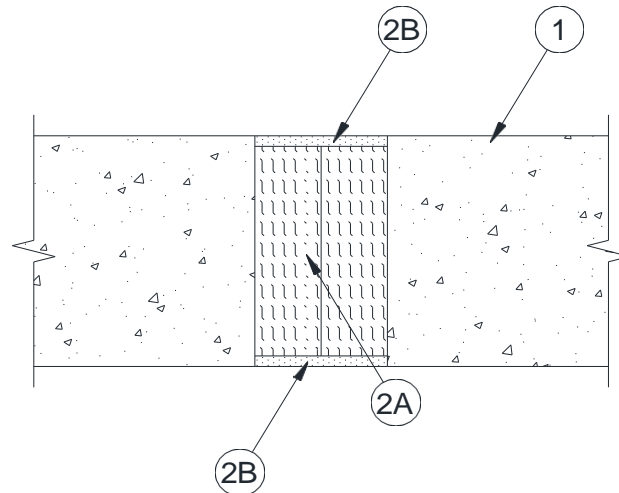
System No. WW-D-1200

March 2017

Assembly Ratings — 3 Hr

Nominal Joint Width — 3-1/2 In. (89 mm)

Class II and III Movement Capabilities — 14 % Compression or Extension
(UL/cUL)



1. **Wall Assembly** — Min 4-1/2 in. (114 mm) thick reinforced lightweight or normal weight (100-150 pcf or 1600-2400 kg/m³) concrete. Wall may also be constructed of any UL Classified **Concrete Blocks***.

See Concrete Blocks (CAZT) category in the Fire Resistance Directory for names of Manufacturers.

2. **Joint System** — Joint System — Max width of joint (at time of installation of joint system) is 3-1/2 in. (89 mm). The joint system is designed to accommodate a max 14 percent compression or extension from its installed width. The joint system shall consist of the following:

A. **Forming Material*** — Min 4 pcf (64 kg/m³) mineral wool batt insulation installed in joint opening as a permanent form. Pieces of batt cut to min width of 4 in. (102 mm) and installed edge-first into joint opening, parallel with joint direction, such that batt sections are compressed min 56 percent in thickness and that the compressed batt sections are recessed from top and bottom surfaces of the floor as required to accommodate the required thickness of fill material. Adjoining lengths of batt to be tightly-butted with butted seams spaced min 36 in. (915 mm) apart along the length of the joint.

B. **Fill, Void or Cavity Material** — Min 1/4 in. (6 mm) thickness of fill material applied within the joint, flush with top and bottom surfaces of wall.

TREMCO INC — Dymonic 100

* Indicates such products shall bear the UL or cUL Certification Mark for jurisdictions employing the UL or cUL Certification (such as Canada), respectively.



Reprinted from the Online Certifications Directory with permission from Underwriters Laboratories Inc.
Copyright © 2017 Underwriters Laboratories Inc. ®

Tremco Commercial Sealants & Waterproofing

3735 Green Road, Beachwood, OH 44122 // Phone: 216.292.5000 // 800.321.7906

220 Wicksteed Avenue, Toronto, ON M4H 1G7 // Phone: 416.421.3300 // 800.363.3213

1451 Jacobson Avenue, Ashland OH 44805 // Phone: 419.289.2050 // 800.321.6357