

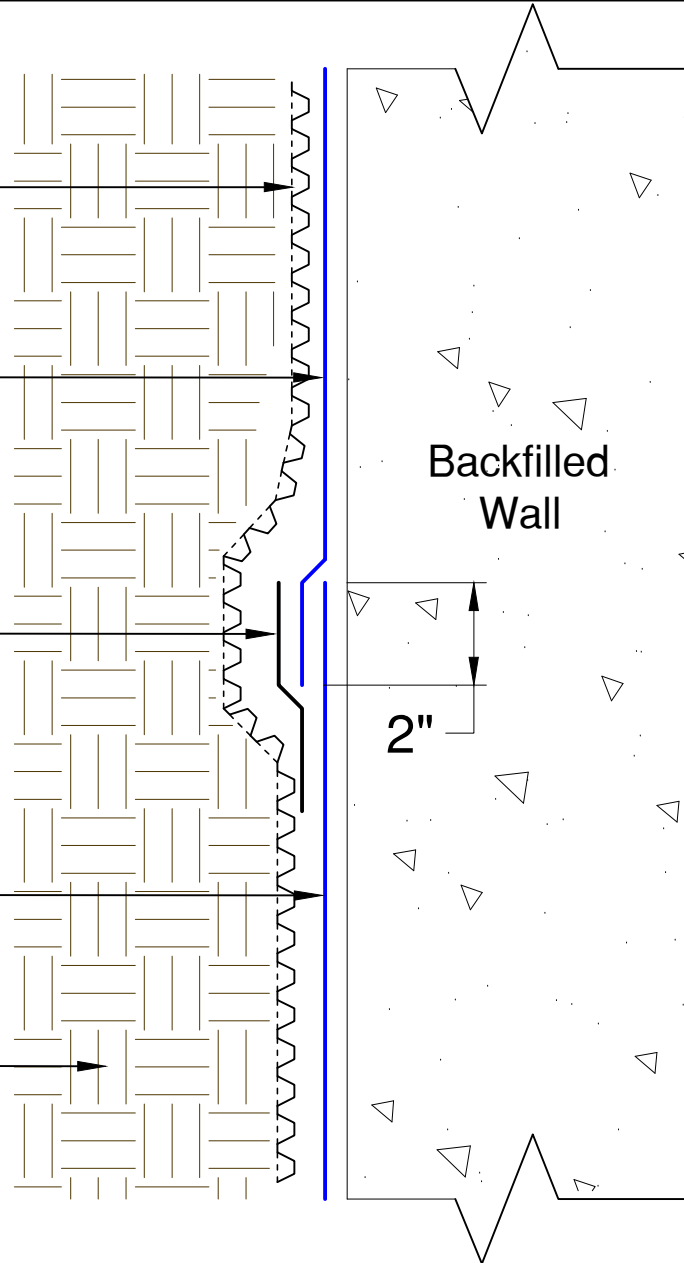
Approved TREMDrain

TREMproof 545/560

Termination Mastic applied to entirely cover seam

TREMproof 545/560

Soil



NOTE: Protection course is not required in typical application. Contact your local Technical Services representative for more information.

TREMCO

www.tremcosealants.com

3735 Green Road * Beachwood, OH 44122
Phone : 866-209-2404 * Fax: 216-766-5535

Project: XXXXX

Detail: TREMproof 500 series - Typical seam detail

This detail is intended for conceptual purposes only.

Drawn by: MI

Checked by: DM

Scale: None

Sheet Number:

Date: 1/11/2016

File Name:

XXXXX

Rev #

00