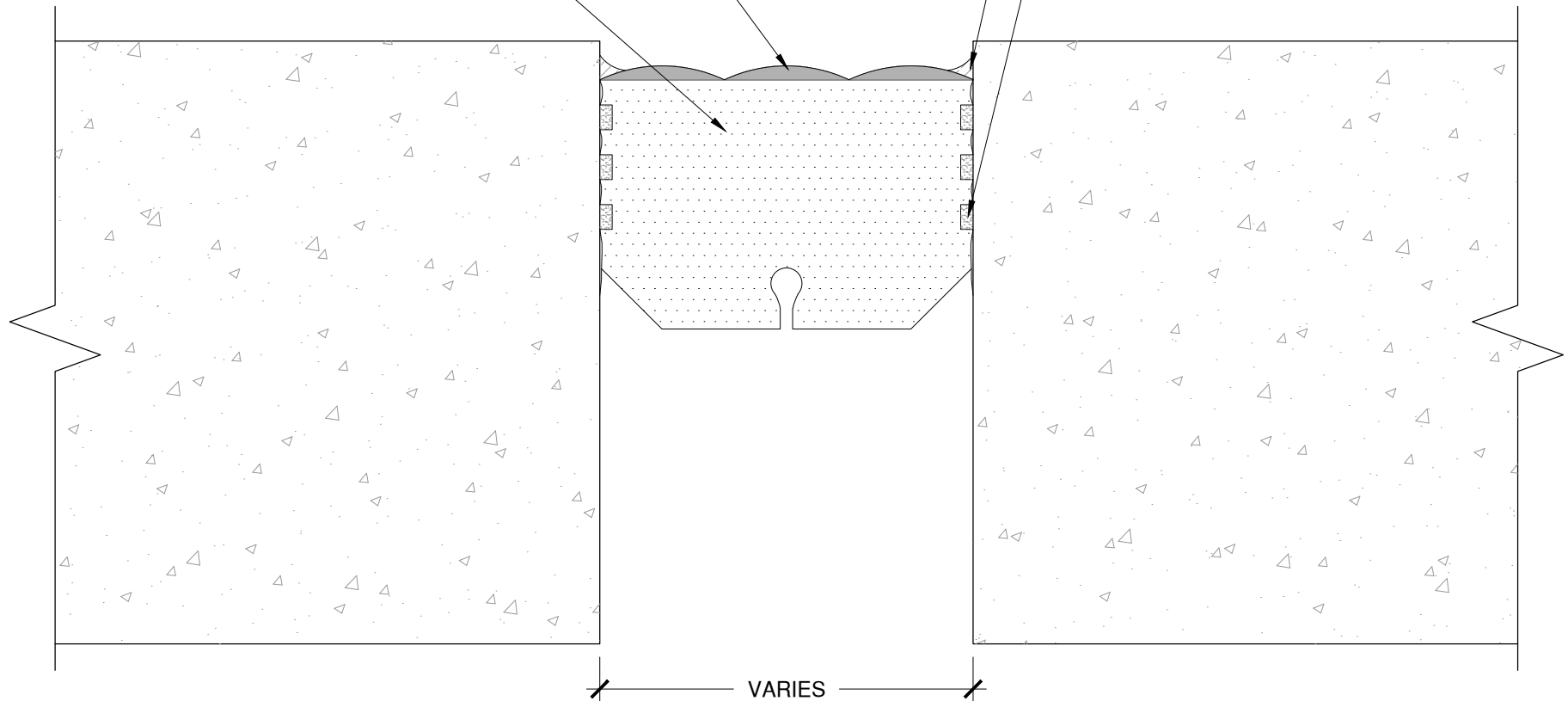


FACTORY APPLIED AND CURED
TRAFFIC-GRADE URETHANE TOPPING

WILLSEAL CLOSED CELL FOAM
WITH ENGINEERED PROFILE

FIELD APPLIED DETAIL SEALANT
(BOTH SIDES OF JOINT)
DETAIL SEALANT SUPPLIED

FIELD APPLIED EPOXY
(BOTH SIDES OF JOINT)
EPOXY SUPPLIED



NOTE: RECESS JOINT $\frac{1}{2}$ " FROM JOINT SURFACE

The architecture, engineering, and design of the project using the Willseal products are the responsibility of the project's design professional. All products and systems must comply with local building codes and standards. This detail is for general information and guidance only and Willseal specifically disclaims any liability for the use of this detail. The project design professional determines, in its sole discretion, whether this detail or a functionally equivalent detail is best suited for the project. This detail is subject to change without notice. Contact Willseal to ensure you have the most recent version.

Willseal Color Coresal H



Willseal Technical Support: 800-274-2813

Detail: Willseal Color Coresal H at Floor to Floor Application - Urethane Topping

Drawn by: HDE

Checked by: AM

Scale: NTS

Date: 7/28/2022

File Name:

WCCH-FF-02



Construction Products Group

www.tremcocpg.com