

NOTE: TREMPRIME QD OR TREMCO APPROVED PRIMER MUST BE APPLIED BEFORE THE APPLICATION OF TREMPROOF 6100

ALL METAL TO BE COATED SHOULD BE PREPARED IN ACCORDANCE WITH TREMCO'S TREMPROOF PUMA APPLICATION INSTRUCTIONS

NON-VEHICULAR OR PEDESTRIAN TRAFFIC ONLY

TREMDRAIN, AS SPECIFIED

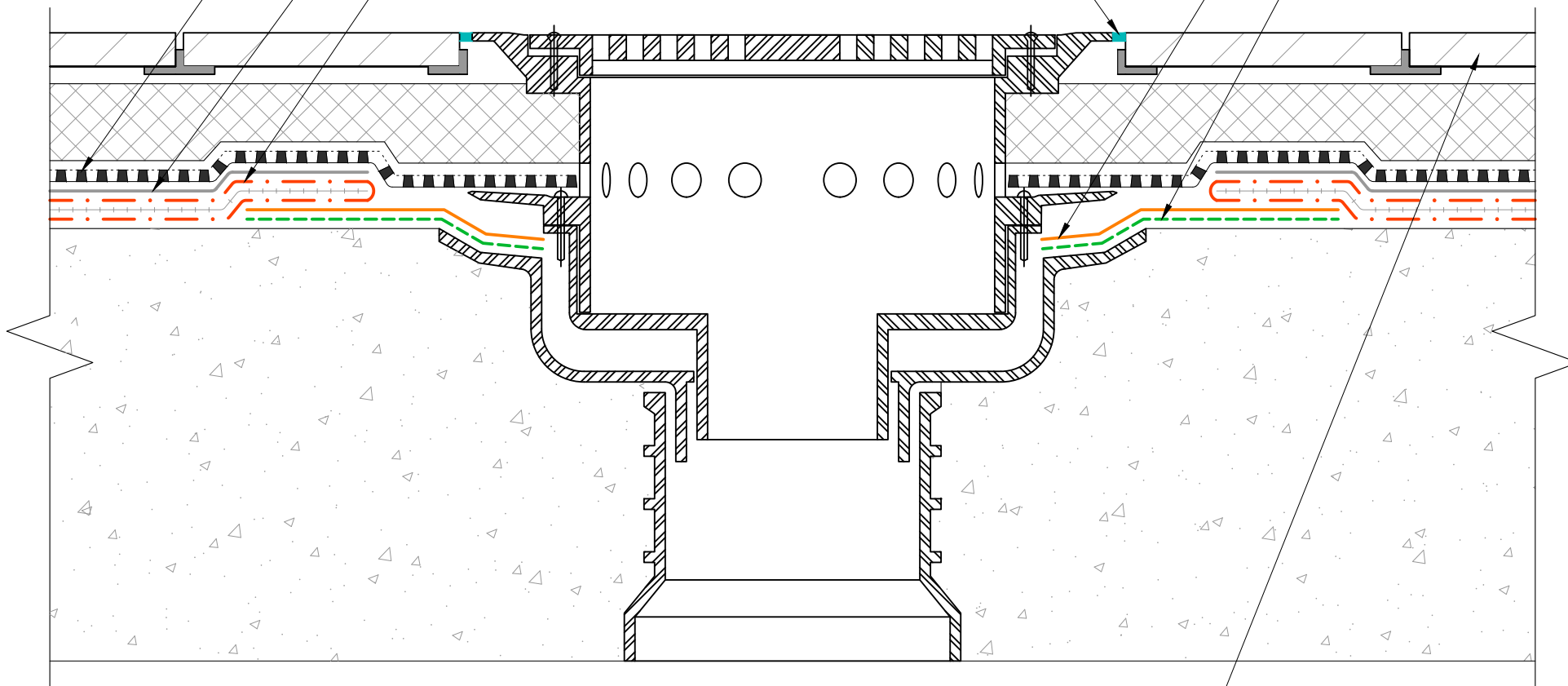
TREMCO PROTECTION COURSE

TREMPROOF 6100 WITH EMBEDDED REINFORCING FABRIC AS SPECIFIED

DYMONIC 100

TREMCO PUMA FLASHING

TREMCO PUMA PRIMER



PAVERS WITH PEDESTALS OVER INSULATION

The architecture, engineering, and design of the project using the Tremco products are the responsibility of the project's design professional. All products and systems must comply with local building codes and standards. This detail is for general information and guidance only and Tremco specifically disclaims any liability for the use of this detail. The project design professional determines, in its sole discretion, whether this detail or a functionally equivalent detail is best suited for the project. This detail is subject to change without notice. Contact Tremco to ensure you have the most recent version.

**TREMPROOF PUMA FLASHING**



Detail: TREMPROOF PUMA FLASHING AT BI-LEVEL DRAIN

File Name:

PUMA-F-D-02

Drawn by: KAB

Checked by: EL

Scale: NTS

Date: 2/9/2022

