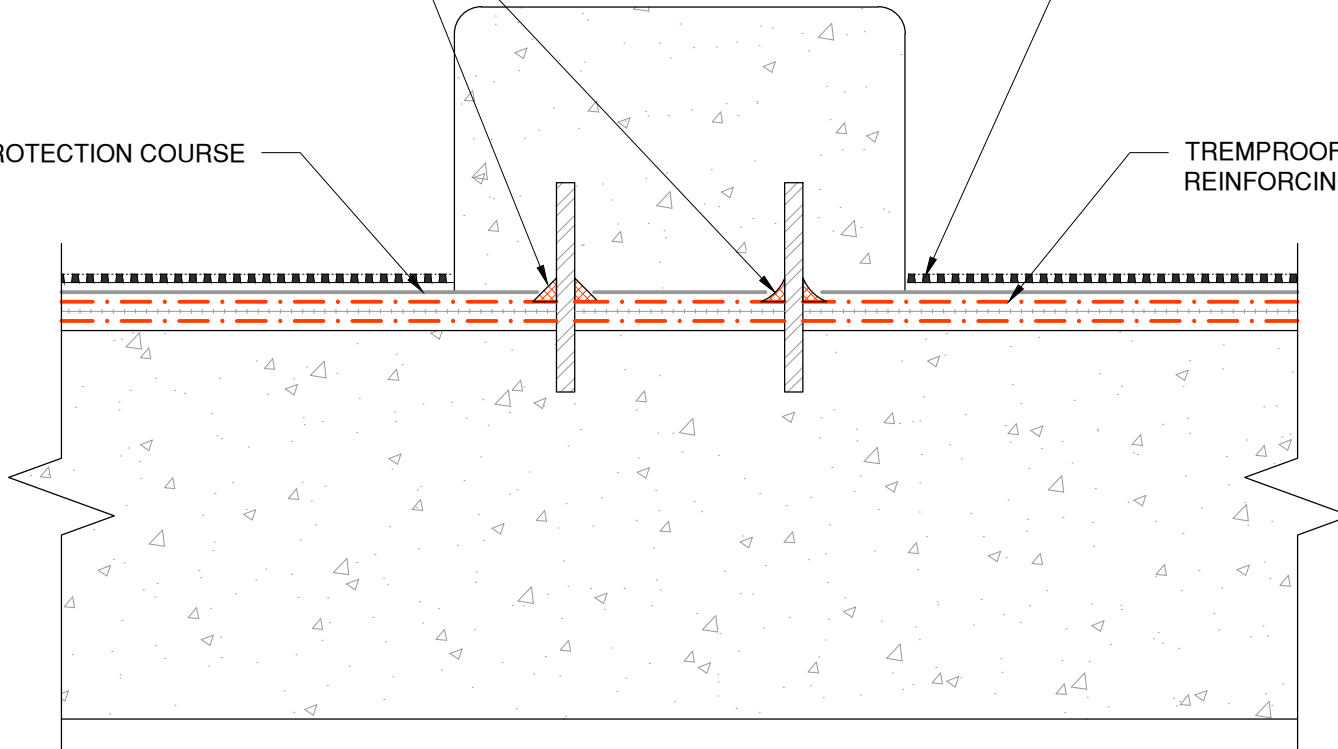


CANT OR DEPRESSED COVE OF
TREMPROOF 6100 TO CLEAN
ROUGHENED STEEL SURFACE

TREMDRAIN, AS SPECIFIED

TREMCO PROTECTION COURSE

TREMPROOF 6100 WITH EMBEDDED
REINFORCING FABRIC, AS SPECIFIED



NOTE: TREMPRIME QD OR TREMCO APPROVED PRIMER MUST BE
APPLIED BEFORE THE APPLICATION OF TREMPROOF 6100

The architecture, engineering, and design of the project using the Tremco products are the responsibility of the project's design professional. All products and systems must comply with local building codes and standards. This detail is for general information and guidance only and Tremco specifically disclaims any liability for the use of this detail. The project design professional determines, in its sole discretion, whether this detail or a functionally equivalent detail is best suited for the project. This detail is subject to change without notice. Contact Tremco to ensure you have the most recent version.

TREMproof 6100



Detail: TREMproof 6100 at Curb with Rebar

File Name:

Drawn by: HDE

Checked by: WH

Scale: NTS

Date: 2/15/2024

H-G-09

Tremco Technical Support: 866-209-2404

www.tremcocpg.com



Construction Products Group