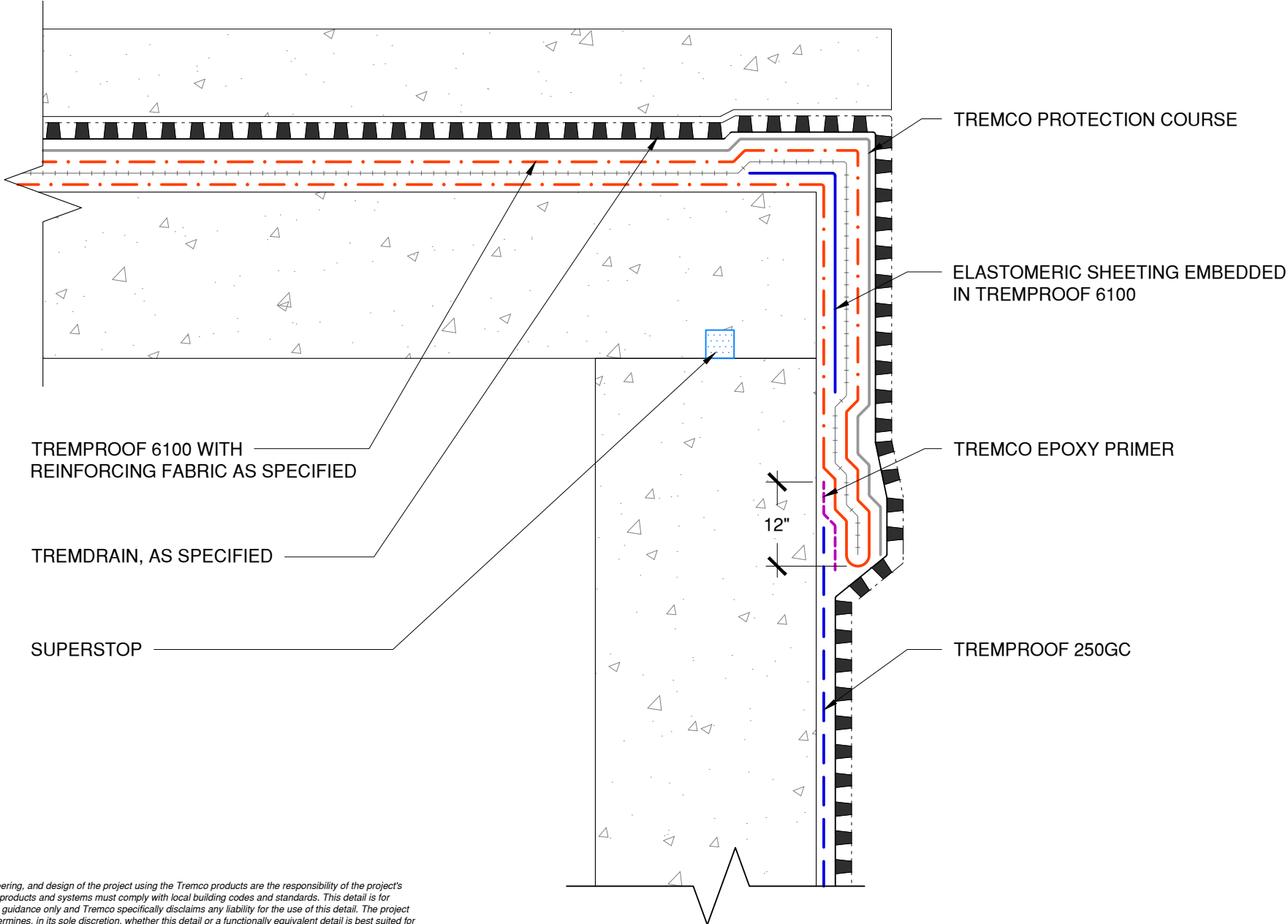


NOTE: TREMPRIME QD OR TREMCO APPROVED PRIMER MUST BE APPLIED BEFORE THE APPLICATION OF TREMPROOF 6100



TREMPROOF 6100 WITH REINFORCING FABRIC AS SPECIFIED

TREMDRAIN, AS SPECIFIED

SUPERSTOP

TREMCO PROTECTION COURSE

ELASTOMERIC SHEETING EMBEDDED IN TREMPROOF 6100

TREMCO EPOXY PRIMER

TREMPROOF 250GC

12"

The architecture, engineering, and design of the project using the Tremco products are the responsibility of the project's design professional. All products and systems must comply with local building codes and standards. This detail is for general information and guidance only and Tremco specifically disclaims any liability for the use of this detail. The project design professional determines, in its sole discretion, whether this detail or a functionally equivalent detail is best suited for the project. This detail is subject to change without notice. Contact Tremco to ensure you have the most recent version.

**TREMPROOF 250GC**



Detail: TREMPROOF 250GC to TREMPROOF 6100 at Deck to Below Grade Wall Transition  
 Drawn by: KAB      Checked by: WH      Scale: NTS      Date: 2/26/2022

File Name:  
**C-250GC-T-03**



[www.tremcocpg.com](http://www.tremcocpg.com)

Tremco Technical Support: 866-209-2404