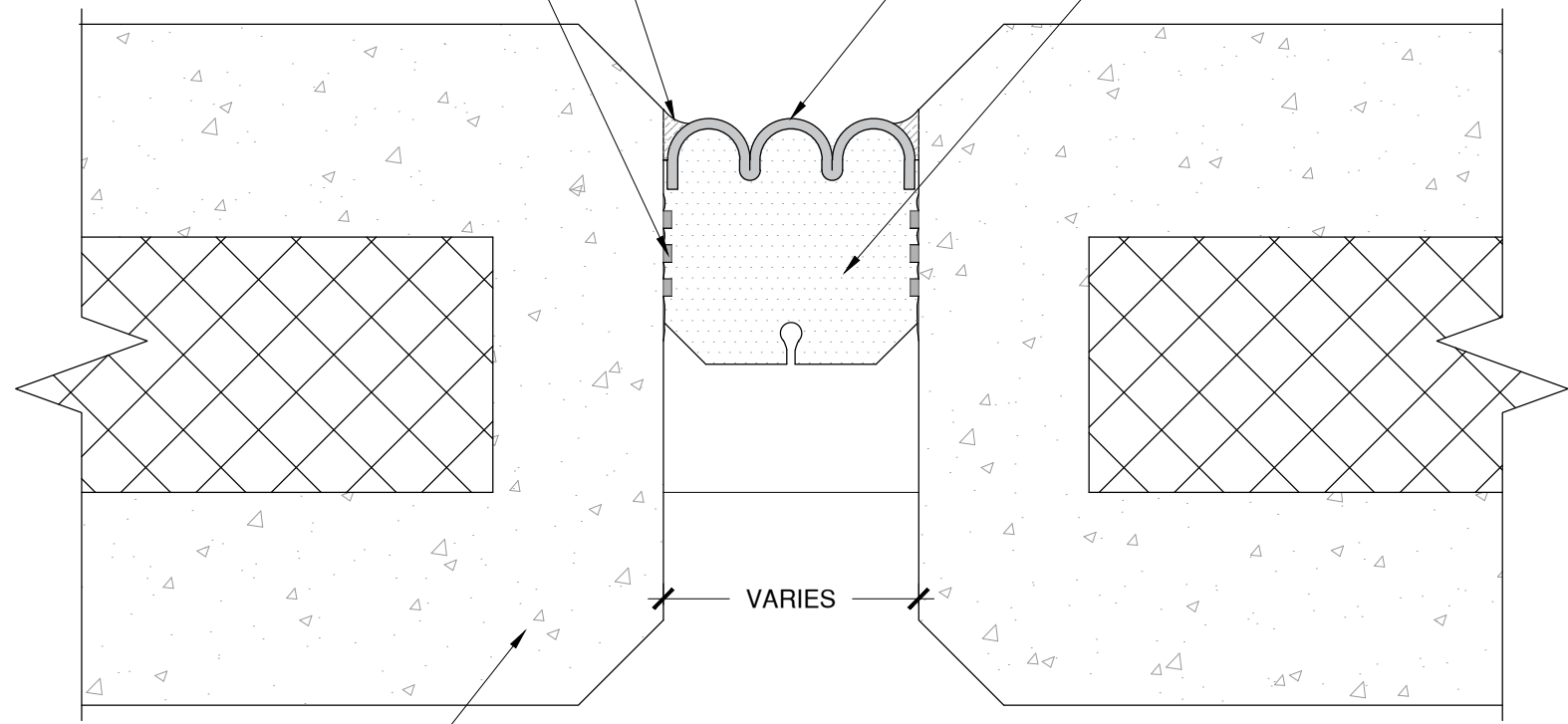


FIELD APPLIED INJECTED SEALANT BAND BOTH SIDES (OPTIONAL) PICK RESISTANT SEALANT SUPPLIED

FACTORY APPLIED AND CURED PICK RESISTANT SEALANT

SUPPLIED SIDEWALL ADHESIVE

WILLSEAL CLOSED CELL FOAM WITH ENGINEERED PROFILE



EXISTING VERTICAL PRECAST CONCRETE PANEL

NOTE: RECESS JOINT 1/4" FROM JOINT SURFACE

The architecture, engineering, and design of the project using the Willseal products are the responsibility of the project's design professional. All products and systems must comply with local building codes and standards. This detail is for general information and guidance only and Willseal specifically disclaims any liability for the use of this detail. The project design professional determines, in its sole discretion, whether this detail or a functionally equivalent detail is best suited for the project. This detail is subject to change without notice. Contact Willseal to ensure you have the most recent version.

Willseal Color Coreseal V



Detail: Willseal Color Coreseal V at Precast Wall Panel Application			
Drawn by: HDE	Checked by: AM	Scale: NTS	Date: 7/14/2022
www.tremcocpg.com			

File Name:
WCCV-WW-06

