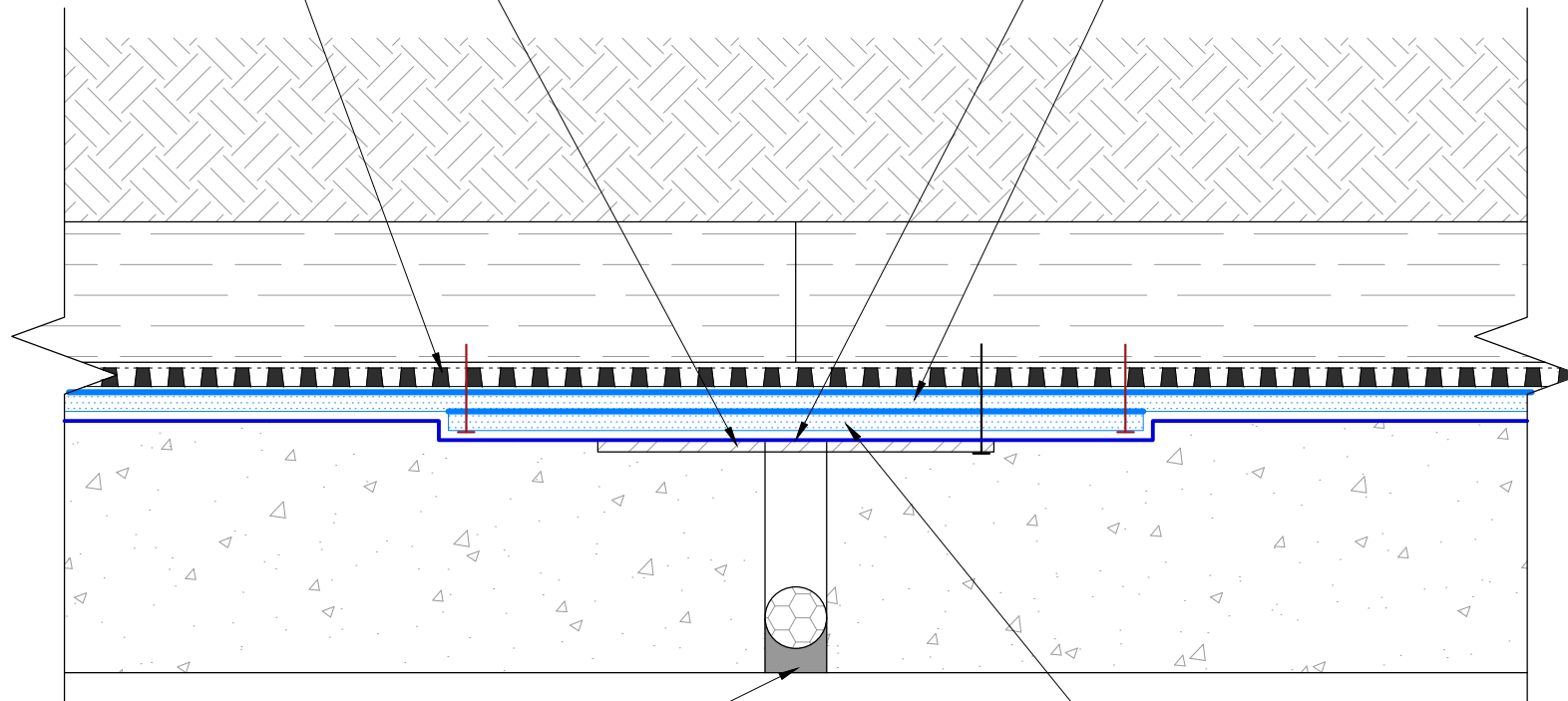


STEEL PLATE CENTERED OVER JOINT AND FASTENED AT ONE SIDE

TREMPROOF 260 AT 100 WET MILS

TREMDRAIN, AS SPECIFIED

PARASEAL LG, BENTONITE SIDE FACING INSTALLER



SEALANT OVER BACKER ROD, BY OTHERS

PARASEAL LG DETAIL STRIP SECURED WITH WIDE CROWN BOX STAPLES EVERY 3" O.C. AND WITH NAILS AND WASHERS EVERY 24" O.C.

NOTES: PARASEAL PRODUCTS REQUIRE A MIN 24 PSF OF COMPACTION/CONFINEMENT IN ORDER TO FUNCTION AS DESIGNED.

NOT RECOMMENDED FOR USE IN SUBMERGED CONDITIONS.

*The architecture, engineering, and design of the project using the Tremco products are the responsibility of the project's design professional. All products and systems must comply with local building codes and standards. This detail is for general information and guidance only and Tremco specifically disclaims any liability for the use of this detail. The project design professional determines, in its sole discretion, whether this detail or a functionally equivalent detail is best suited for the project. This detail is subject to change without notice. Contact Tremco to ensure you have the most recent version.*

**TREMPROOF TWS BLINDSIDE WALL**



Detail: TREMPROOF TWS BLINDSIDE WALL AT EXPANSION JOINT - PLAN VIEW

File Name:

Drawn by: HDE

Checked by: WH

Scale: NTS

Date: 4/26/2022

TWS-BSW-08



Tremco Technical Support: 866-209-2404

[www.tremcocpg.com](http://www.tremcocpg.com)