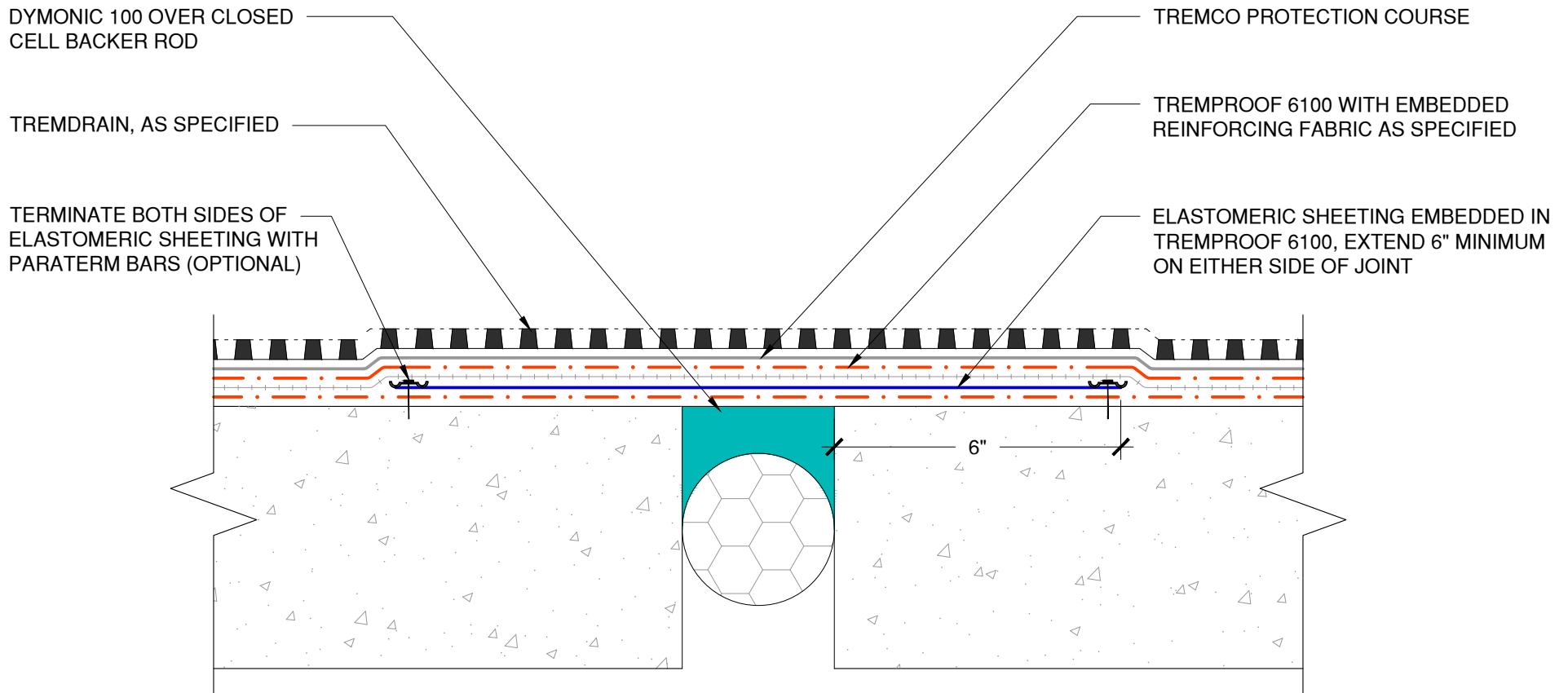


NOTE: TREMPRIME QD OR TREMCO APPROVED PRIMER MUST BE APPLIED BEFORE THE APPLICATION OF TREMPROOF 6100



The architecture, engineering, and design of the project using the Tremco products are the responsibility of the project's design professional. All products and systems must comply with local building codes and standards. This detail is for general information and guidance only and Tremco specifically disclaims any liability for the use of this detail. The project design professional determines, in its sole discretion, whether this detail or a functionally equivalent detail is best suited for the project. This detail is subject to change without notice. Contact Tremco to ensure you have the most recent version.

TREMProof 6100



Detail: TREMProof 6100 at Floor to Floor Expansion Joint with Sealant
 Drawn by: KAB Checked by: WH Scale: NTS Date: 3/2/2022

File Name:
H-EJ-FF-01



www.tremcocpg.com

Tremco Technical Support: 866-209-2404