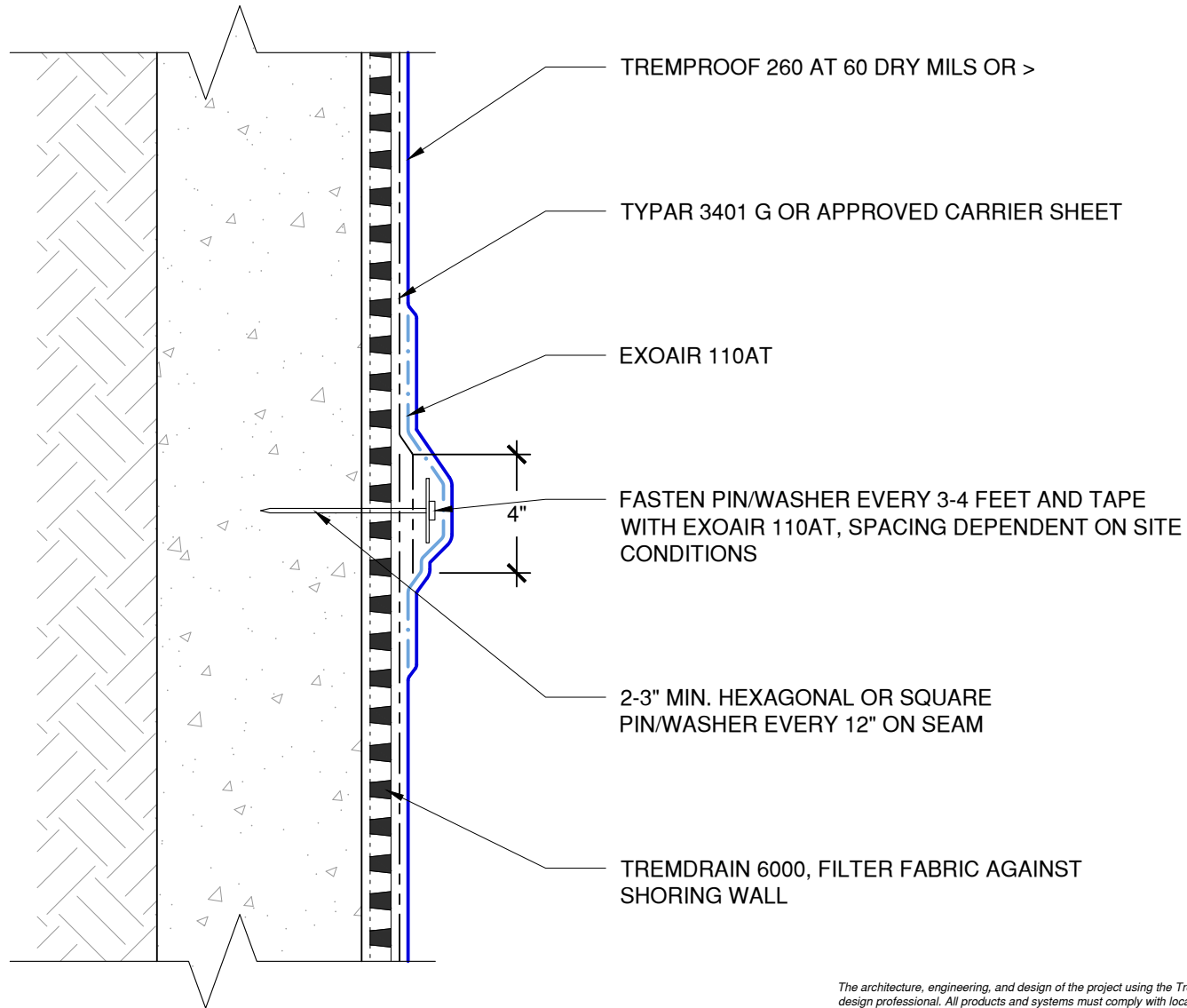


NOTE: NOT INTENDED FOR SUBMERGED OR HYDROSTATIC HEAD CONDITIONS

TYPAR CARRIER SHEET TO BE FASTENED, PIN/WASHER, EVERY 4-5 FEET ON A HORIZONTAL AND VERTICAL GRID PATTERN, SPACING DEPENDENT ON SITE CONDITIONS



*The architecture, engineering, and design of the project using the Tremco products are the responsibility of the project's design professional. All products and systems must comply with local building codes and standards. This detail is for general information and guidance only and Tremco specifically disclaims any liability for the use of this detail. The project design professional determines, in its sole discretion, whether this detail or a functionally equivalent detail is best suited for the project. This detail is subject to change without notice. Contact Tremco to ensure you have the most recent version.*

### TREMPROOF 260 Blindside



Tremco Technical Support: 866-209-2404

Detail: TREMPROOF 260 at Blindside Wall Seams with ExoAir 110AT

Drawn by: KAB

Checked by: WH

Scale: NTS

Date: 3/4/2022

File Name:

F-BSW-S-02



Construction Products Group

[www.tremcocpg.com](http://www.tremcocpg.com)